

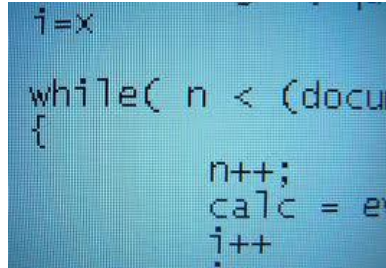


## Version 5.8 Roof Products Enhancements List

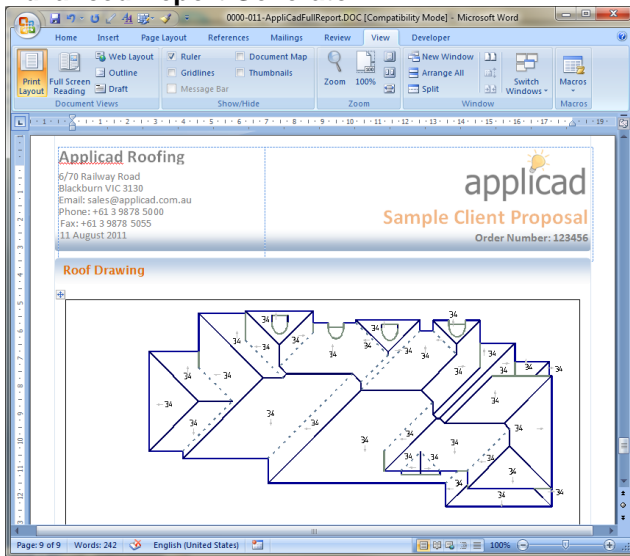
The following enhancements have been made to the Version 5.8 Roof products:

### Speed Improvements

We have converted the entire code-set from APPL (a superset of the Pascal code) previously used to interface to the CAD system to C++. This has allowed us to incorporate many new features as well as creating a marked improvement in overall speed and stability of the software. This also provides us with a firm foundation to improve the software going forwards from Version 5.8.



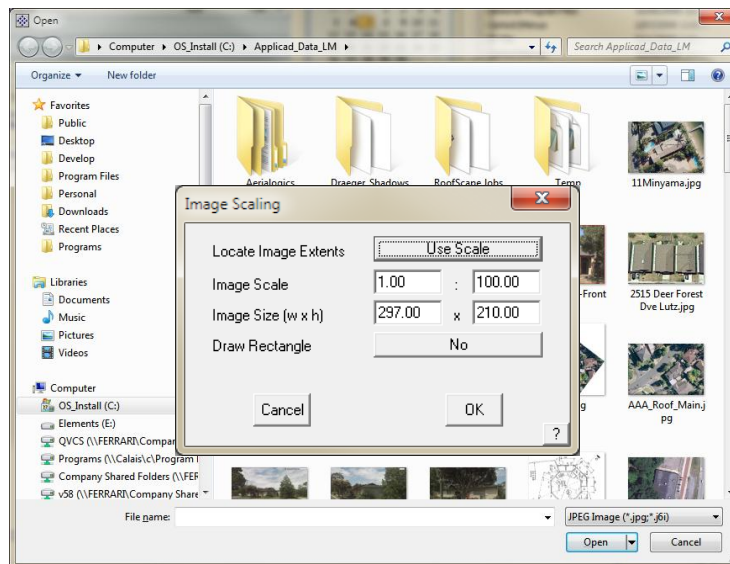
### Advanced Report Generator



Previously, reporting out of the Applicad Software has entailed creating complex templates using CAD tools. Whilst we were able to produce the majority of what our customers required, the tools were a little on the clumsy side. We now have the capability to output all of the graphical and text-based information from the Applicad software to Microsoft Word® and/or Microsoft Excel®. New Key Text Strings such as ###Image, ###ImageC etc have also been created to allow our users to insert roofing geometry images into the Word and Excel documents automatically.

### Digitise Aerial Images

With the addition of a number of new customers who require advanced raster image digitizing, we have set about adding a number of new options to the Digitize-Roof commands to permit the pre-scaling and post-scaling of raster images. In addition to these new functions, we have also added the ability to insert a bounding rectangle for pre-scaled images, to modify the CPL (Construction Plane) in the middle of the digitizing process and also to perform a Stepback should you digitize in the wrong location. For our US customers, we have added the ability to import Dodge Plans. (.PLN TIFF files)



### Applicad Australia

6/70 Railway Rd  
Blackburn VIC  
Australia 3130  
Phone: 61 3 9878 5000  
Fax: 61 3 9878 5055

### Head Office (Toll Free)

From USA and Canada:  
011 800 Applicad  
011 800 2775 4223  
From UK:  
00800 Applicad  
00800 2775 4223

### Applicad USA Inc

1340 US Highway 1  
Jupiter, FL, 33469  
Ph: (561) 748 0545  
Fax: (561) 748 0546  
Toll free: 1 800 966 1698

### Applicad UK Ltd

MWB Business Exchange  
Exchange House  
494 Midsummer Boulevard  
Central Milton Keynes  
MK9 2EA  
Phone: 01908 255998  
Fax: 01908 255700

Applicad Australia  
is a trading name of  
JR Systems Pty Ltd  
ABN: 98 052 127 787

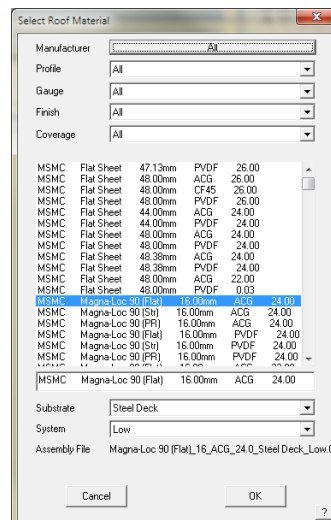


## Version 5.8 Roof Products Enhancements List

### Commercial Roofing

For one of our larger customers we have substantially modified the software with regards Commercial Roofing specification. The Cover -> Select-Metal dialog has been upgraded to also allow the specification of the substrate over which the cladding is being applied as well as a system being used. The system is user-definable and allows the user to specify various fastener systems and accessories depending on the options selected.

Accessories have also been added to Metal Panels to assist with the specification of the commercial panel systems. In addition to accessories now being specifiable for metal panel systems, additional estimation methods have also been added to the accessories menu to allow the calculation of accessory quantities to be modified based on zone selection. This allows users to modify the fastener spacing, for instance, for panel systems on various parts of a roof.



**Applicad Australia**  
6/70 Railway Rd  
Blackburn VIC  
Australia 3130  
Phone: 61 3 9878 5000  
Fax: 61 3 9878 5055

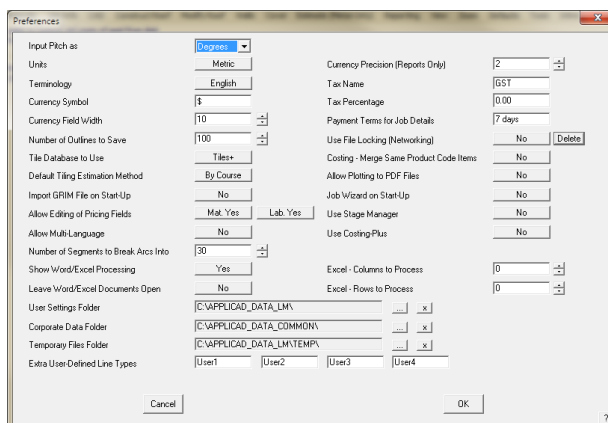
**Head Office (Toll Free)**  
From USA and Canada:  
011 800 Applicad  
011 800 2775 4223  
From UK:  
00800 Applicad  
00800 2775 4223

**Applicad USA Inc**  
1340 US Highway 1  
Jupiter, FL, 33469  
Ph: (561) 748 0545  
Fax: (561) 748 0546  
Toll free: 1 800 966 1698

### Advanced Folder Management

As part of making the software more suitable to corporate environments and dispersed groups, we have added a Corporate Folder and a Temporary Folder to the existing User folder specification. This allows the user to structure the software to work according to how many of our corporate customers have requested:

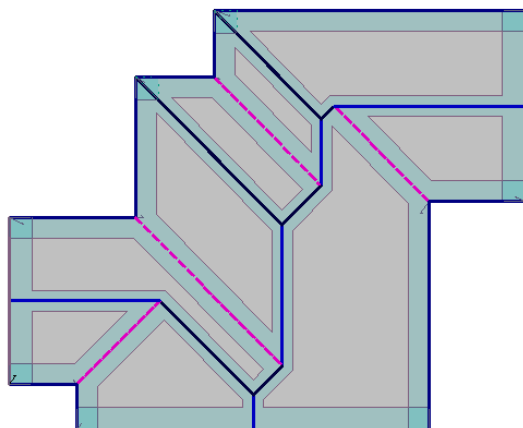
- User Folder to store user specific information like screen layout, colours etc.
- Corporate Folder to store company-specific information like data sets and pricing files.
- Temporary Folder to store transient files that can be deleted on an ad-hoc basis.



**Applicad UK Ltd**  
MWB Business Exchange  
Exchange House  
494 Midsummer Boulevard  
Central Milton Keynes  
MK9 2EA  
Phone: 01908 255998  
Fax: 01908 255700

Applicad Australia  
is a trading name of  
JR Systems Pty Ltd  
ABN: 98 052 127 787

### Wind Loads and Zones



A new feature added to Version 5.8 is the ability to define areas of a roof classed as "Zones". These zones are simply-created roof areas that allow the user to determine the application rate of roofing accessories for each zone.

This feature was developed specifically for roofing customers who are required to specify a varied spacing for fasteners on certain parts of a roof compared to other areas. Such applications can be easily used for specifying Wind Zone areas of a roof and modifying the number of fasteners specified by engineers due to uplift factors.

Email: [enquiries@applicad.com](mailto:enquiries@applicad.com)  
Web: <http://www.applicad.com>



## Version 5.8 Roof Products Enhancements List

Other applications also exist for this functionality, including the specification of insulation and/or underlayment for a given area of a roof and also for calculating support battens/purlins that are used to support the increased number of accessories or fasteners.

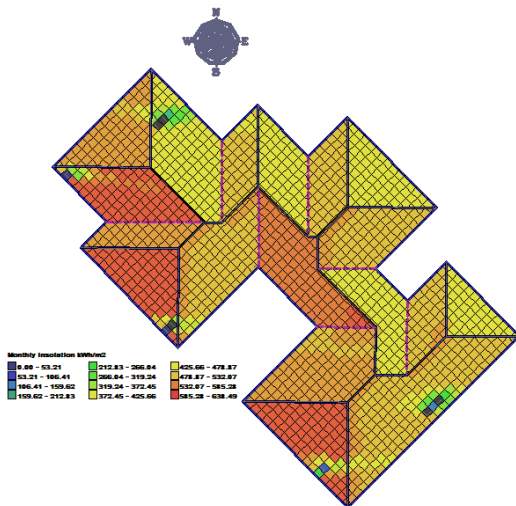
### User Defined Roof Annotation

A range of new features have been added to the software to assist with the documentation and annotation of the roof geometry and panel systems. A large number of options have been added to the dimension defaults, thus allowing for dimension colours, offsets from lines etc. to be specified. In addition, other dimensioning options have been added to the code to permit the dimensioning of roof areas, azimuths (for solar roofing requirements) and also pitch directions.

### Mouse Zoom

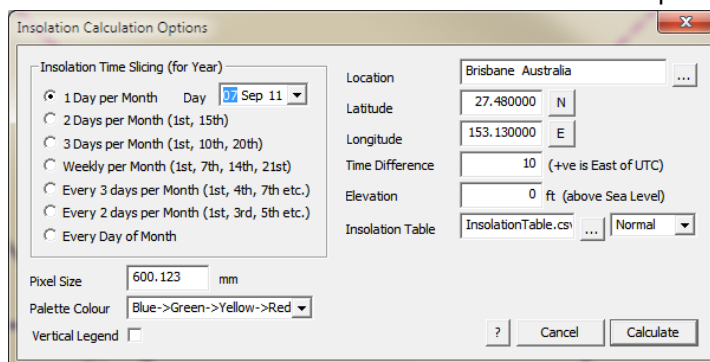
One of the most sought-after features of Version 5.8 will be the ability to zoom the roof model in and out based on using the mouse scroll-wheel. This has been a long-requested feature and we are please to have been able to provide this functionality in Version 5.8

### Solar (Separate Module)



determine the location on the planet for the insolation or shadows to be determined at.

In addition to Insolation and Shadow applications, a range of tools to insert and modify roof grids have been created and will allow users to produce printouts of roofs so that penetrations and other roof features can be measured and marked.



A whole range of tools have been added to the 5.8 Version of the Applicad Roofing Software to assist users with the location and calculations for Solar Panel installations.

Based on requests from our customers, we have developed tools to calculate insolation amounts for roofs, complex and simple shadow diagrams and also the ability to generate AVI files of the resultant shadow movements.

A simple tool has been created to allow for the insertion of a North Marker, thus orientating the model according to True North. Then, the latitude and longitude of the roof are specified as well as its height above sea-level. These final options

**Applicad Australia**  
6/70 Railway Rd  
Blackburn VIC  
Australia 3130  
Phone: 61 3 9878 5000  
Fax: 61 3 9878 5055

**Head Office (Toll Free)**  
From USA and Canada:  
011 800 Applicad  
011 800 2775 4223  
From UK:  
00800 Applicad  
00800 2775 4223

**Applicad USA Inc**  
1340 US Highway 1  
Jupiter, FL, 33469  
Ph: (561) 748 0545  
Fax: (561) 748 0546  
Toll free: 1 800 966 1698

**Applicad UK Ltd**  
MWB Business Exchange  
Exchange House  
494 Midsummer Boulevard  
Central Milton Keynes  
MK9 2EA  
Phone: 01908 255998  
Fax: 01908 255700

Applicad Australia  
is a trading name of  
JR Systems Pty Ltd  
ABN: 98 052 127 787



## Version 5.8 Roof Products Enhancements List



### Improved Help, Documentation and Software Licensing

Software licensing and help files, as well as all system documentation has been updated and is accessible through a single Help menu. This will greatly assist our users to access registration, manuals and online tips and tricks all from the one easy location.

#### Applicad Australia

6/70 Railway Rd  
Blackburn VIC  
Australia 3130  
Phone: 61 3 9878 5000

Fax: 61 3 9878 5055

#### Head Office (Toll Free)

From USA and Canada:

011 800 Applicad

011 800 2775 4223

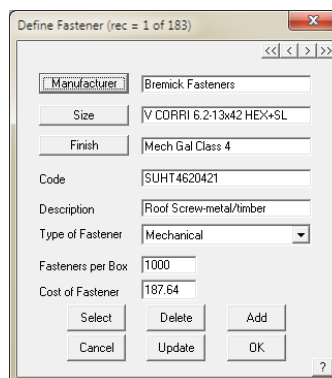
From UK:

00800 Applicad

00800 2775 4223

### Smaller Features / Enhancements

- Report Generation output modified to print output based on stages specified in Stage Manager.
- Finish option added to Fasteners to allow different pricing and product codes for coloured and plain fasteners. In addition, a number of small modifications have been added to Fasteners to improve the reliability of fastener selection and linkage.
- Modified the Multi-Hip command so that a positive rotation angle creates a clockwise rotation on-screen.
- Changed all visual text references of the word "Verge" to "Gable".
- Fixed issue where Extend-Barge was not trimming back on an atrium.



#### Applicad USA Inc

1340 US Highway 1

Jupiter, FL, 33469

Ph: (561) 748 0545

Fax: (561) 748 0546

Toll free: 1 800 966 1698

#### Applicad UK Ltd

MWB Business Exchange

Exchange House

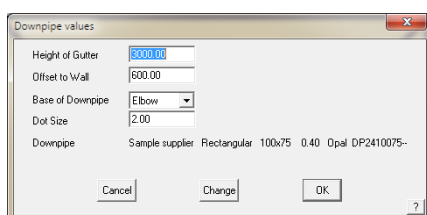
494 Midsummer Boulevard

Central Milton Keynes

MK9 2EA

Phone: 01908 255998

Fax: 01908 255700



- Modified downpipes so you can change the size of the Dot placed to represent the downpipe. This was a major issue for a lot of customers who were unhappy with the size of the dot as you previously had to set the plot scale, insert the downpipe and then re-set the plotscale.

- Modified drawing of dormers so that zero length lines get deleted rather than being included and then messing up the output later on. This was a problem that manifested itself only when no projection length or eaves were present and created issues with the model later in the modelling process.
- Changed dots on end of leader lines to be plot-scaled, thus not creating huge dots when printing out within sub-figures. A report-related issue.
- Fixed issue with 3D figure not being printed with surface planes for the 3D output within Reporting.
- Changed code to allow zero value for number of decimal places on multi-pitches output. This allows much cleaner output of US-based slope measurements.

#### Applicad Australia

is a trading name of

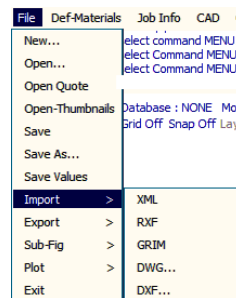
JR Systems Pty Ltd

ABN: 98 052 127 787

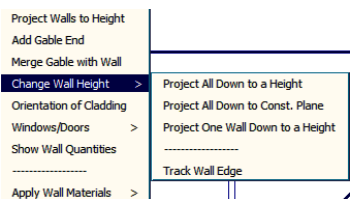


## Version 5.8 Roof Products Enhancements List

- Modified code to change the representation for the pitch string when outputting using Key Text Strings. This is to align it with new dimensioning options.
- Updated drawing calculation code to include multiple stories. Multiple-storey buildings now print the appropriate number of pages, instead of first storey on page one and every other storey on page two.
- Fixed formatting of the output string so that whole cutting lists wrap together rather than splitting up of cutting list dimensions. This reduces the chances of reading the cutting lists incorrectly when they wrap around in AppliCad and Word® templates.
- Added functionality to read and write XML files of the roof model as per specification received from another supplier.
- Fixed issue of missing sheets on cutting list. Not often noticed but it was possible for sheets to go missing during the linear nesting process.
- Changed Tiles+ wording from Accessories to Fittings and from Components to Accessories. This reduces confusion when comparing accessories in Tiles+ to accessories in Metal Roofing and Flashings.
- Removed Password Protection now that we have divided files up and also added in new folder structures. No longer required and can be handled at O/S level.
- Fixed issue with walls not being drawn when Eave OHG on flat roofs was set to zero.



- Added in new options for projecting Walls. Users can project Walls to the CPL, a set distance and can also decide on which walls to project rather than having to do all as per 5.7 Version.



- Fixed issue of negative areas being created sometimes in Tally-Quantities. Also fixed issue where Area dimensions weren't deleted by Delete command.
- Added option to allow a roof plane (or wall plane if customer has Warlock installed) to be created if we try to change material of a non-roof plane. Very useful function for creating crazy roof and wall planes.
- Modified Surface Plane Insert for Smartlines so it uses the intersection and trace tolerances as set in the CAD system defaults. This allows users to determine the sensitivity of joins in lines and co-planarity.
- Added Eave type option to flat plane dialog so that user can specify the Eave type to be inserted. In 5.7 this was not specificable.
- Modified SmartLines code to make functions more streamlined. For Hip, Valley and Gable line insertion you now set the options at the start and then can select wall lines consecutively, thus greatly improving modelling speed.

### AppliCad Australia

6/70 Railway Rd  
Blackburn VIC  
Australia 3130  
Phone: 61 3 9878 5000  
Fax: 61 3 9878 5055

### Head Office (Toll Free)

From USA and Canada:  
011 800 AppliCad  
011 800 2775 4223  
From UK:  
00800 AppliCad  
00800 2775 4223

### AppliCad USA Inc

1340 US Highway 1  
Jupiter, FL, 33469  
Ph: (561) 748 0545  
Fax: (561) 748 0546  
Toll free: 1 800 966 1698

### AppliCad UK Ltd

MWB Business Exchange  
Exchange House  
494 Midsummer Boulevard  
Central Milton Keynes  
MK9 2EA  
Phone: 01908 255998  
Fax: 01908 255700

AppliCad Australia  
is a trading name of  
JR Systems Pty Ltd  
ABN: 98 052 127 787



## Version 5.8 Roof Products Enhancements List

- Added extra plane selection options for Intersection function within Smartlines to select the plane intersection type as either 3-points, 2-lines or a plane.
- Modified Icon menu for SmartLines to bring most commonly used Icons to the fore and place less-used icons in the background.
- Made tile lines a little bigger when displaying coursing so that they appear like Tiles. Also removed staggering code for Tiles+ drawing of tiles and replaced with code that shows tick marks at calculation boundaries.
- Fixed issue of "Per Code Item" option for Tiles plus using a comma to join two fields together. Modified it to ':' symbol as per documentation.
- Fixed issue with negative Dutch Gables crashing and also fixed the Extend Barge command not being able to be undone and re-done.
- Added option for Fixtures to ask for Hole cut. Also allowed them now to be aligned to Plane. This included adding code to Copy-Array to allow the figure to be copied in its current plane.
- Added downpipes to the drawing subfigure so that they will now appear on the reporting drawings.
- Modified all user files to be .CSV files so that users can now "see" all Applicad data rather than having to rely on data being saved in binary format files. This permits editing of all Applicad data files outside the software using Microsoft Excel®.
- Changed Cover Flashings dialog so that it only displays the number of line types in the current model.
- Modified reporting of information through Supply & Install to use a new Windows dialog utilising a scroll box. Also modified the output to group items as field, flashings, accessories or fasteners.

### Applicad Australia

6/70 Railway Rd  
Blackburn VIC  
Australia 3130  
Phone: 61 3 9878 5000  
Fax: 61 3 9878 5055

### Head Office (Toll Free)

From USA and Canada:  
011 800 AppliCad  
011 800 2775 4223  
From UK:  
00800 AppliCad  
00800 2775 4223

### Applicad USA Inc

1340 US Highway 1  
Jupiter, FL, 33469  
Ph: (561) 748 0545  
Fax: (561) 748 0546  
Toll free: 1 800 966 1698

### Applicad UK Ltd

MWB Business Exchange  
Exchange House  
494 Midsummer Boulevard  
Central Milton Keynes  
MK9 2EA  
Phone: 01908 255998  
Fax: 01908 255700

Applicad Australia  
is a trading name of  
JR Systems Pty Ltd  
ABN: 98 052 127 787

Manufacturer	Description	Qty	Rate	SubTotal	Discount %	Total	Category
Roof/Wall Cover							
	Delivery	1.00	0.00	0.00	0.00	0.00	Delivery
Ampelite	ZSCGC/8,Corrugated,Wonder Glass,8 Ga.	337.67	0.00	0.00	0.00	0.00	Straight
Flashings/Fittings							
BHP	BHPRC1,BHP Ridge capping,Classic Cream, Ga.	65.74	2.00	131.48	0.00	131.48	Ridge
BHP	VRCTLGA,Valley,Galvanised, Ga. @ 8000	1.00	1.00	1.00	0.00	1.00	Valley
BHP	FBHT42CTL--,Metal fascia,Classic Cream, Ga.	41.46	1.00	41.46	0.00	41.46	Fascia
BHP	OG60--,O Gee Gutter,Classic Cream, Ga.	41.44	1.00	41.44	0.00	41.44	Gutter
Accessories							
Test1	Test3,Test2	118.33	9.99	1182.10	0.00	1182.10	Extra
Fasteners							

Labour Items		Material Items		Totals	
Labour SubTotal	413.94	Material SubTotal	1397.48	Job Total (ex GST)	2000.84
Labour Markup	12.00	Material Markup	10.00	Rebate/Extra	0.00
Labour Total	463.62	Material Total	1537.23	GST (0.00%)	0.00
				Total (incl GST)	2000.84

Quote Groups: Notes, Save, Set Suppliers, Add Item, Export GRIM, Load, Set Discounts, Add Other, Export CSV, Delete, Set Finishes, Tile Waste, Cancel, Print, OK

Email: [enquiries@applicad.com](mailto:enquiries@applicad.com)  
Web: <http://www.applicad.com>