

Version 5.7 Roof Products Enhancement List

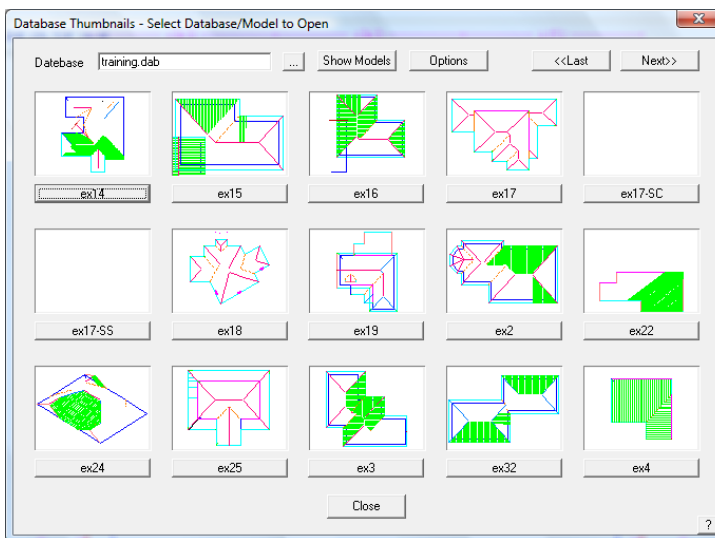
The following enhancements have been made to the Version 5.7 Roof products:

Model and Fixture Selection

A new option has been added to the File menu to allow users to select a roof model using Thumbnail previews. A dialog similar to the one illustrated here provides the user with up to 50 thumbnail previews of the model contained within any selected database.

The model is then simply selected by clicking the button below the desired model.

This new feature has also been added to the Fixture insertion functionality, thus providing faster selection of the desired fixture figure for insertion.



AppliCad Australia

6/70 Railway Rd
Blackburn VIC
Australia 3130
Phone: 61 3 9878 5000
Fax: 61 3 9878 5055

Head Office (Toll Free)

From USA and Canada:
011 800 AppliCad
011 800 2775 4223
From UK:
00800 AppliCad
00800 2775 4223

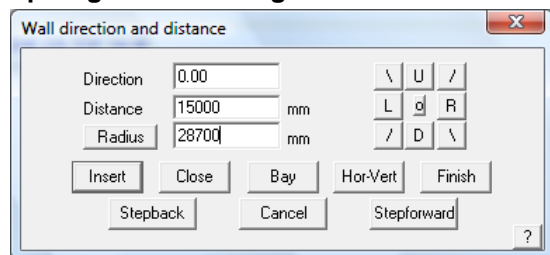
AppliCad USA Inc

1340 US Highway 1
Jupiter, FL, 33469
Ph: (561) 748 0545
Fax: (561) 748 0546
Toll free: 1 800 966 1698

AppliCad UK Ltd

MWB Business Exchange
Exchange House
494 Midsummer Boulevard
Central Milton Keynes
MK9 2EA
Phone: 01908 255998
Fax: 01908 255700

Sprung Metal Roofing



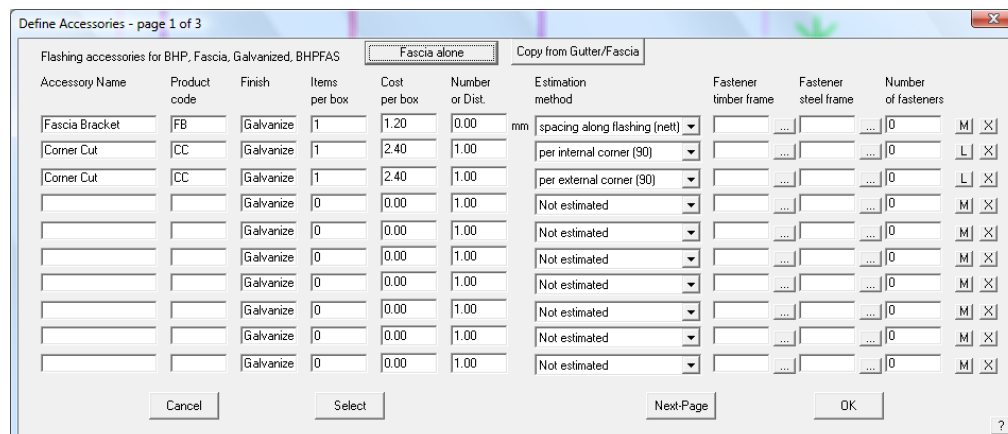
Many of our users supply and/or install metal roofs sprung over a curve. In such cases, the dimensions supplied are often the span of the roof and the radius of the arc.

A new feature has been added to the Track-Outline dialog to permit the user to specify the plan distance of the span (the chord length) and the radius of the

arc. In such an instance, the software will then track in the direction the user has requested, but the distance will be modified by the radius travelled to increase the span to the correct distance.

Accessories as Labour Items

The functionality of Accessories for Flashings has been modified to permit the user to create labour items, in addition to the material items previously available. Such functionality permits greater estimating options for users who specify labour costs based on the installation of flashings that are based on the accessories rather than the flashing themselves.



Products

Sorcerer
Roof Wizard
Roof Magician
Roof Maestro
Warlock
PocketROOF
FlightMaster
Cadair

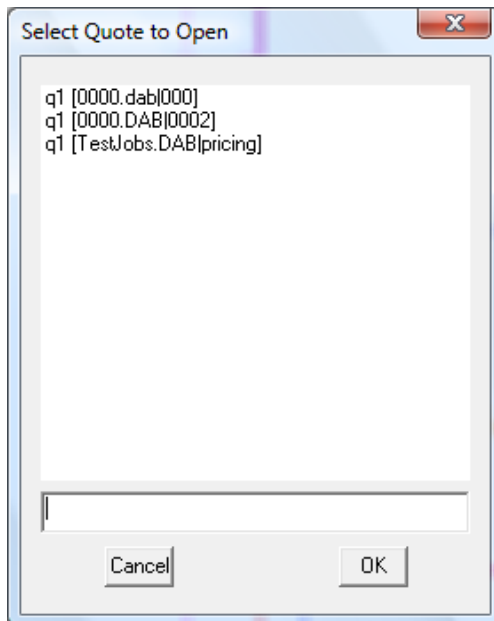
Email: enquiries@applicad.com.au
Web: <http://www.applicad.com.au>

Version 5.7 Roof Products Enhancement List

Quote Register

In Version 5.7 and onwards, each time a user saves away a quotation, the information pertaining to the quotation will be saved away into a file entitled QuoteRegister.CSV. By default, the information saved into the file will be the Quote Name, Database Name, Model Name, Date and Time however the user can specify the format of the Quote Register being created by specifying a GRIM file entitled QuoteRegister.GRT. The quote register functionality permits users to store away information pertaining to quotes and create win/lose information from the software for business improvement.

In addition to this functionality, we have created a new option in the pulldown menu entitled File -> Open Quote. This function allows the user to open a given quotation and will automatically load the roof model and then go straight into the quotation screen and display the quote information.



AppliCad Australia

6/70 Railway Rd
Blackburn VIC
Australia 3130
Phone: 61 3 9878 5000
Fax: 61 3 9878 5055

Head Office (Toll Free)

From USA and Canada:
011 800 AppliCad
011 800 2775 4223
From UK:
00800 AppliCad
00800 2775 4223

AppliCad USA Inc

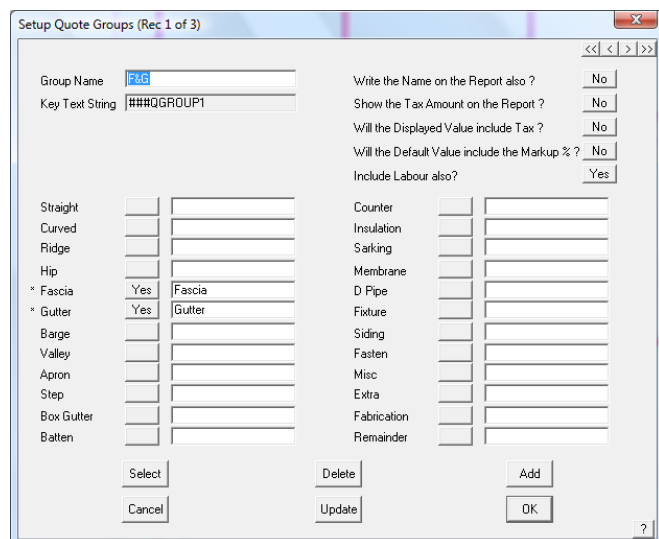
1340 US Highway 1
Jupiter, FL, 33469
Ph: (561) 748 0545
Fax: (561) 748 0546
Toll free: 1 800 966 1698

AppliCad UK Ltd

MWB Business Exchange
Exchange House
494 Midsummer Boulevard
Central Milton Keynes
MK9 2EA
Phone: 01908 255998
Fax: 01908 255700

AppliCad Australia
is a trading name of
JR Systems Pty Ltd
ABN: 98 052 127 787

Improvements to Quote Groups



Allowed for user defined quote group items for labour as well as materials. User defined quote group items can be specified in an external file entitled QuoteGroups.DAT.

This new functionality permits the user to define all catch items for a specific quote group given the new functionality providing further material and labour items

In addition to user defined Quote Group fields, a new field has been added entitled "Remainder" and this field can be used by any Quote Group

definition (generally the last) to catch the remaining items not summed using the previous Quote Groupings.

Quote Number Generation

Modified quote number generation to allow for ####DD, ####MM, ###YY, ####YYYY to allow user to create dates within the quote number. In addition to this, fields specified as a number with a predefined field width now include leading zeros, to ensure field width is maintained.

Products

Sorcerer
Roof Wizard
Roof Magician
Roof Maestro
Warlock
PocketROOF
FlightMaster
Cadair

Version 5.7 Roof Products Enhancement List

Extra and Miscellaneous Items

A new Estimation Method field has been added to Extra and Miscellaneous Items to permit the quantity to either remain as a set number (previous functionality) or to be multiplied by the roof area.

This functionality allows for the user to specify Extra and Miscellaneous items that are somewhat calculated by the software rather than simply inserting a gross quantity as was previously available.

Manufacturer	Description	Product Code	Qty	Cost	Type of Item	Est. Method
Home Hardware	Std Roof Maint - TRADE	STDRFMNT	1.00	121.68	Material Item	Use Quantity Alone
Home Hardware	Long Carry	LNGCAR	1.00	1.25	Material Item	Mult. Qty. by Roof Area
			0.00	0.00	Material Item	Use Quantity Alone
			0.00	0.00	Material Item	Use Quantity Alone
			0.00	0.00	Material Item	Use Quantity Alone
			0.00	0.00	Material Item	Use Quantity Alone
			0.00	0.00	Material Item	Use Quantity Alone
			0.00	0.00	Material Item	Use Quantity Alone
			0.00	0.00	Material Item	Use Quantity Alone
			0.00	0.00	Material Item	Use Quantity Alone

Improvements to Stage Manager

In addition to the new Stage Manager created as part of V5.6, feedback from our users has prompted us to include some extra functionality. The new items added include:

- Breaking up of Barge/Fascia as Barge in the same way as Gutter/Fascia
- Inclusion of a whole extra item entitled "Verandah" to specify items included/excluded as part of a verandah/porch.
- Creation of a new Stage entitled "Combined" to mimic the functionality of the "Combined Stage" under Costing.

Batten	Not included
Insulation	Not included
Fibreglas	Not included
Downpip	Not included
Curved P	Not included
TOTAL	

Scale 1 : 300

Image Scaling

Added a new option for users to create a file SCALES.DAT which permits the user to specify the allowable scales that a drawings can be scaled to.

If no file is specified, the default scales from the software are used.

Generating Offcuts.

Added new options to the generating of offcuts under Gen-Offcuts. These new options permit much greater flexibility in the insertion of offcuts onto the roof and result in far less modification required to the offcuts once inserted.

AppliCad Australia

6/70 Railway Rd
Blackburn VIC
Australia 3130
Phone: 61 3 9878 5000
Fax: 61 3 9878 5055

Head Office (Toll Free)

From USA and Canada:
011 800 AppliCad
011 800 2775 4223
From UK:
00800 AppliCad
00800 2775 4223

AppliCad USA Inc

1340 US Highway 1
Jupiter, FL, 33469
Ph: (561) 748 0545
Fax: (561) 748 0546
Toll free: 1 800 966 1698

AppliCad UK Ltd

MWB Business Exchange
Exchange House
494 Midsummer Boulevard
Central Milton Keynes
MK9 2EA
Phone: 01908 255998
Fax: 01908 255700

AppliCad Australia
is a trading name of
JR Systems Pty Ltd
ABN: 98 052 127 787

Products

Sorcerer
Roof Wizard
Roof Magician
Roof Maestro
Warlock
PocketROOF
FlightMaster
Cadair

Version 5.7 Roof Products Enhancement List

Smaller Features / Enhancements

- Added Tile Waste output based on Coursing to Tile Waste dialog. This works for Tiles, Shingles and Shakes.
- Added a number of new functions for SmartLines etc:
Valley Drains
Step as an extra line option for Draw Freehand
Line Rotate function
Trim to ZLine function
Insert-Axes
- Modified code for printing of custom profiles so that if the PROFILELABEL tag gets deleted, the text still resizes to 2.0mm.
- Added a new feature to costing entitled Costing-Plus. This included the Text Strings for Costing Plus.
- Added in ReturnCode of 4 for Linear Nesting so that new sheets are created rather than extending past maximum sheet length. Also added in filling in the sheets so that you can visibly see nesting progress.
- Fixed issue with Dormers where inserting same dormer on each end of a single line resulted in error message stating you were trying to insert the same dormer twice.
- Modified Custom Profiles to allow arcs/circles to be selected and to preclude the angle calculation in such an instance. In such a case, the previous line will be used to determine angle.
- Added Rebate/Extra item to Costing dialog for when the user has modified the price using the option. Added ###Rebate Key Text String.
- Fixed output for key text strings ###DPQty and ###FallName.
- Changed software so if Labour Value is 0, then it says "Supply Only" for ###Supply Key Text String.
- Changed Width Tolerance value for Tile Coursing so that wider tiles may incorporate further waste opportunity.
- Changed size of template selection box to auto fit names of templates.
- Added ###QQMarginTable and ###PaySummaryTable2 to allow for extra functionality for Costing Plus.
- Added saving away of Gutter Overhang and Ridge Offset for Tiles+ coursing defaults.
- Added further counter batten options for re-roofing customers who do not remove existing roof but rather use previous standing seam roofing as their starting base.
- Modified software to allow for negative discounts for customers and line items in the costing.
- Added Swap_CO_Combo code to Gen Offcuts modify and also added another check to Linear Nesting to ensure sheets can't go past maximum sheet length.

AppliCad Australia

6/70 Railway Rd
Blackburn VIC
Australia 3130
Phone: 61 3 9878 5000
Fax: 61 3 9878 5055

Head Office (Toll Free)

From USA and Canada:
011 800 AppliCad
011 800 2775 4223
From UK:
00800 AppliCad
00800 2775 4223

AppliCad USA Inc

1340 US Highway 1
Jupiter, FL, 33469
Ph: (561) 748 0545
Fax: (561) 748 0546
Toll free: 1 800 966 1698

AppliCad UK Ltd

MWB Business Exchange
Exchange House
494 Midsummer Boulevard
Central Milton Keynes
MK9 2EA
Phone: 01908 255998
Fax: 01908 255700

AppliCad Australia
is a trading name of
JR Systems Pty Ltd
ABN: 98 052 127 787

Products

Sorcerer
Roof Wizard
Roof Magician
Roof Maestro
Warlock
PocketROOF
FlightMaster
Cadair

Email: enquiries@applicad.com.au
Web: <http://www.applicad.com.au>

Version 5.7 Roof Products Enhancement List

- Modified Rafter Line insertion under Battens/Purlins menu to draw all rafters for a given plane to suit re-roofing customers.
- Added option for Full Job Wizard to have flat roofs also.
- Changed functionality for reading in Wall Openings (pre defined) from a file as this had opportunity to hang software.
- Updated functionality of wall plane on/off and wall direction on/off functions.
- Modified auto insert of lap direction code so that lap arrows are away from gable ends and also added code to auto update sheets inserted if lap directions are reversed.
- Changed location of the ? in the dialog order so that it doesn't become the default button. All previous default buttons restored.
- Added in defaults for the display of wall and roof planes and wall directions.

Issue Resolution

- Fixed issue where image would sometimes not fit the diagonal line, being caused by the CPL not being in the correct orientation.
- Fixed issue where walls on Skillion roofs were not being placed on correct layer, so display code wouldn't turn them off.
- Fixed issue with Notes not Adding properly.
- Fixed issue where renumber value was not set, thus resulting in software sometimes looping when user was selecting OK and not "renumber" option.
- Fixed some issues to do with Battens2, including adding hip/valley battens when only specifying one plane.
- Amended long strings in language files so that strings > 80 characters are truncated.
- Fixed RoofDef.BIN saving issue where default values for the software were often being overwritten with rubbish, creating general program instability.
- Fixed issue of underlay/sarking being produced on a roof with no metal on it.
- Fixed output of Customer.CSV so that it can be read/written in Excel.
- Fixed issue with Change Block Lengths in Blocking where it was rounding the number of sheets.
- Fixed issue where modifying a bearing for Modify Outline was not modifying the value.
- Fixed issue with Custom flashings not producing accessories for Single Line or User1 through User4 linestyles.

AppliCad Australia

6/70 Railway Rd
Blackburn VIC
Australia 3130
Phone: 61 3 9878 5000
Fax: 61 3 9878 5055

Head Office (Toll Free)

From USA and Canada:
011 800 AppliCad
011 800 2775 4223
From UK:
00800 AppliCad
00800 2775 4223

AppliCad USA Inc

1340 US Highway 1
Jupiter, FL, 33469
Ph: (561) 748 0545
Fax: (561) 748 0546
Toll free: 1 800 966 1698

AppliCad UK Ltd

MWB Business Exchange
Exchange House
494 Midsummer Boulevard
Central Milton Keynes
MK9 2EA
Phone: 01908 255998
Fax: 01908 255700

AppliCad Australia
is a trading name of
JR Systems Pty Ltd
ABN: 98 052 127 787

Products

Sorcerer
Roof Wizard
Roof Magician
Roof Maestro
Warlock
PocketROOF
FlightMaster
Cadair

Version 5.7 Roof Products Enhancement List

- Fixed ordering of sheets output for Reporting Panel Layout where identifiers were incorrect.
- Fixed issue with Coursing Calculations for Accessories to match number of field tiles if coursing waste options applied. Fixed labels for labour to match user defined fields from LabourFile.DAT.
- Fixed issue where first point of calibrated image digitizing wasn't snapping to the angles and lengths.
- Fixed issue where Counter Battens variable was unset, thus the list for counter battens would sometime be blank.
- Fixed issue with tapered panels trimming to inner circles when drawing for first time.

AppliCad Australia

6/70 Railway Rd
Blackburn VIC
Australia 3130
Phone: 61 3 9878 5000
Fax: 61 3 9878 5055

Head Office (Toll Free)

From USA and Canada:
011 800 AppliCad
011 800 2775 4223
From UK:
00800 AppliCad
00800 2775 4223

AppliCad USA Inc

1340 US Highway 1
Jupiter, FL, 33469
Ph: (561) 748 0545
Fax: (561) 748 0546
Toll free: 1 800 966 1698

AppliCad UK Ltd

MWB Business Exchange
Exchange House
494 Midsummer Boulevard
Central Milton Keynes
MK9 2EA
Phone: 01908 255998
Fax: 01908 255700

AppliCad Australia
is a trading name of
JR Systems Pty Ltd
ABN: 98 052 127 787

Products

*Sorcerer
Roof Wizard
Roof Magician
Roof Maestro
Warlock
PocketROOF
FlightMaster
Cadair*