



Sorcerer

Advanced Software for Roof Modeling and Estimating

Tutorial for Editing Your Tilecol.DAT, Extras.DAT and Misc.DAT Files

Document Issue 1.0.0 - 14th October, 1999

Table of Contents

TABLE OF CONTENTS	2
INTRODUCTION.....	2
Using this manual.....	2
HOW TO EDIT YOUR FILES.....	3
How to Edit Your Tilecol.DAT File.....	3
How to Edit Your Extras.DAT File and Misc.DAT	5
Misc.DAT File	6

Introduction

Using this manual

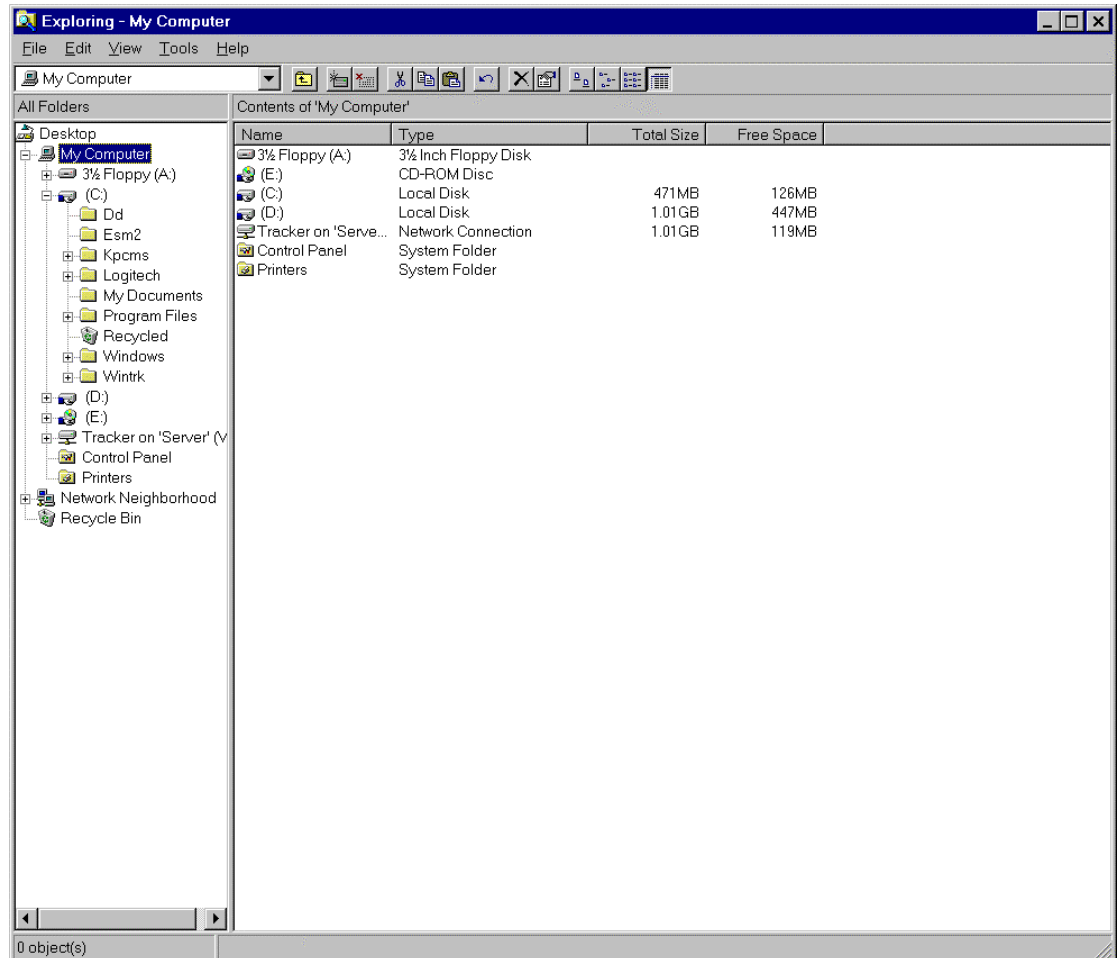
This tutorial is designed to explain, step by step, the process of editing your Tilecol.DAT, Extras.DAT and Misc.DAT files. The steps that will be explained are basically the same for editing any .DAT files.

This manual will be helpful if you don't know how to, or forget how to edit your files.

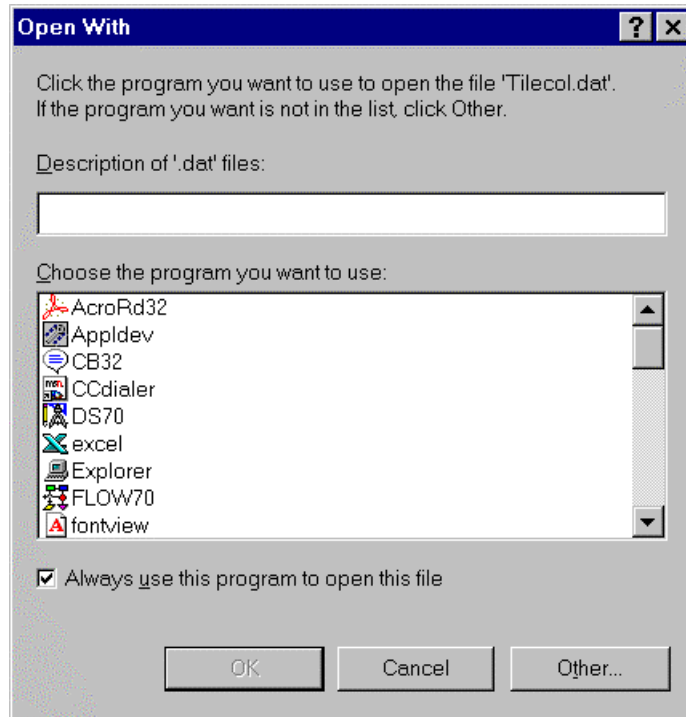
How To Edit Your Files.

How to Edit Your Tilecol.DAT File

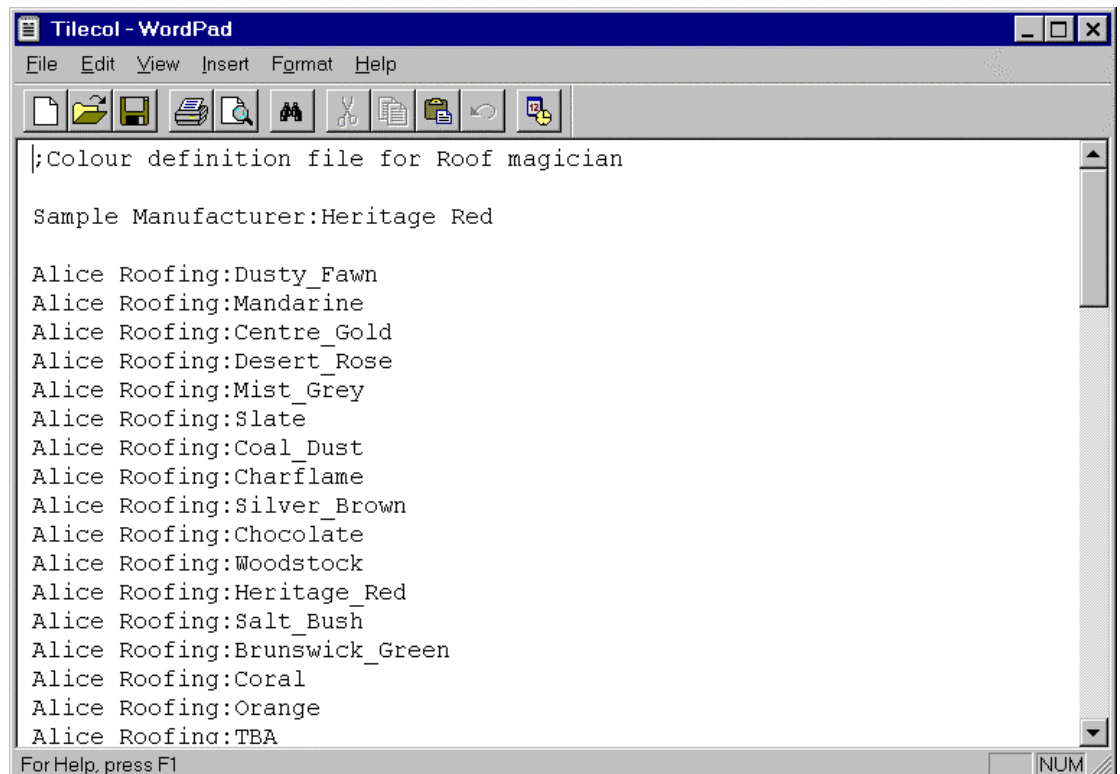
To edit your Tilecol.DAT file, you must first enter the Windows Explorer program. This program is located in the Programs menu under the Start menu. This will bring up the following dialog.



From here select the C drive, then double click on Program Files, followed by AppliCad, followed by the Roof Magician (or Sorcerer) and finally double click on the Programs Folder. Scroll down until you find the Tilecol.DAT file and select it. This will highlight the file. From here go up to File in the pulldown menu and select Open. This may bring up the following dialog box. Some systems may automatically open the file.



Using the scroll bar on the right side of the dialog scroll down until you find the application **WordPad**. Double click on this application and it will open your Tilecol.DAT file for you. It should look something like this.

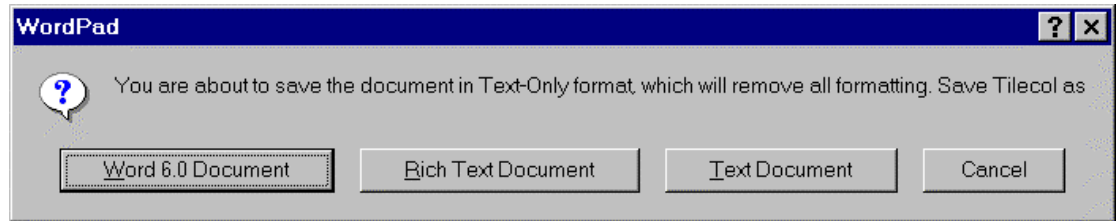


With this dialog now open you can type in your tiles, manufacturer followed by the color.

NOTE: Manufacturers names must be identical to those in the tile(shingle or shake) database otherwise it will not work properly. This includes upper/lower case,

hyphenations, spacing etc.

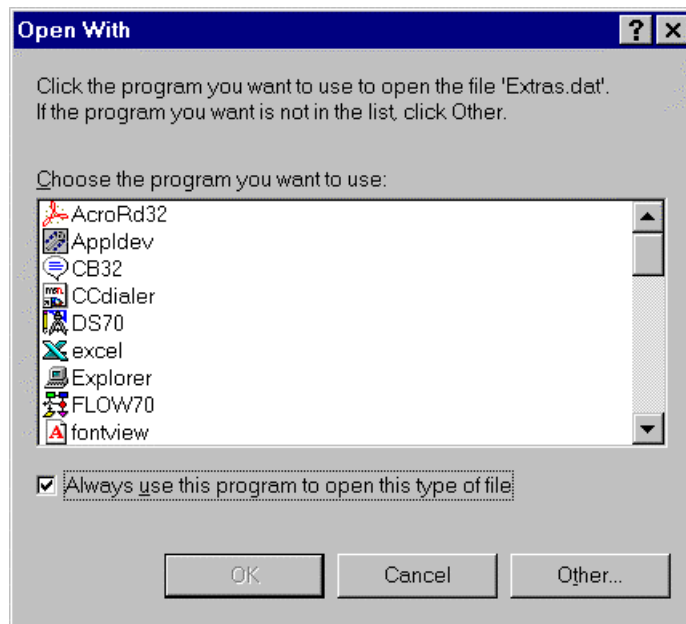
With your new tiles now written in you must save them into this file. To do this simply click on the floppy disk in the tool bar (third icon from the left), bringing up the following dialog box.



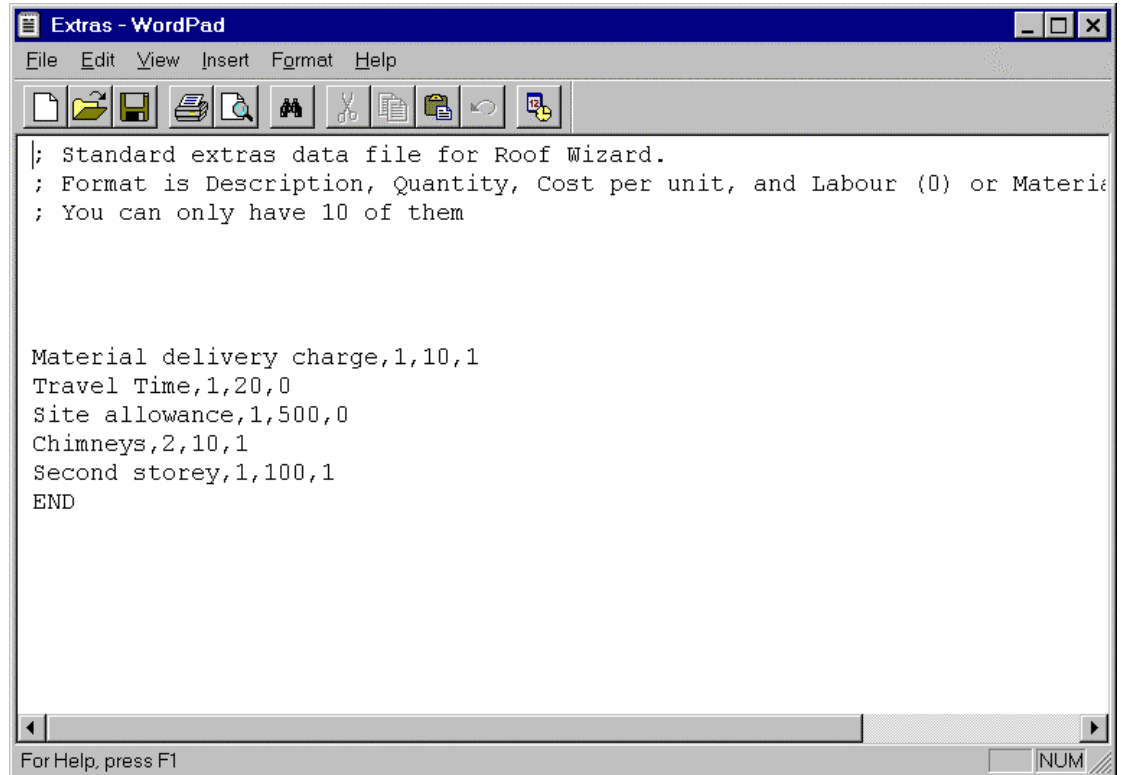
From here select **Text Document**. Your new tiles will now be saved.

How to Edit Your Extras.DAT File and Misc.DAT

To edit your Extras.DAT or Misc.DAT file, the process is almost identical to that of how to edit your Tilecol.DAT file. That process is to open Windows Explorer from the Programs menu under the Start menu. From here select the C drive, then double click on Program Files, followed by AppliCad, followed by the appropriate software and finally double click on the Programs folder. Scroll down until you find the Extras.DAT or misc.DAT file and select it. This will highlight the file. From here go up to File in the pulldown menu and select Open. This may bring up the following dialog box, other systems may automatically open the file.



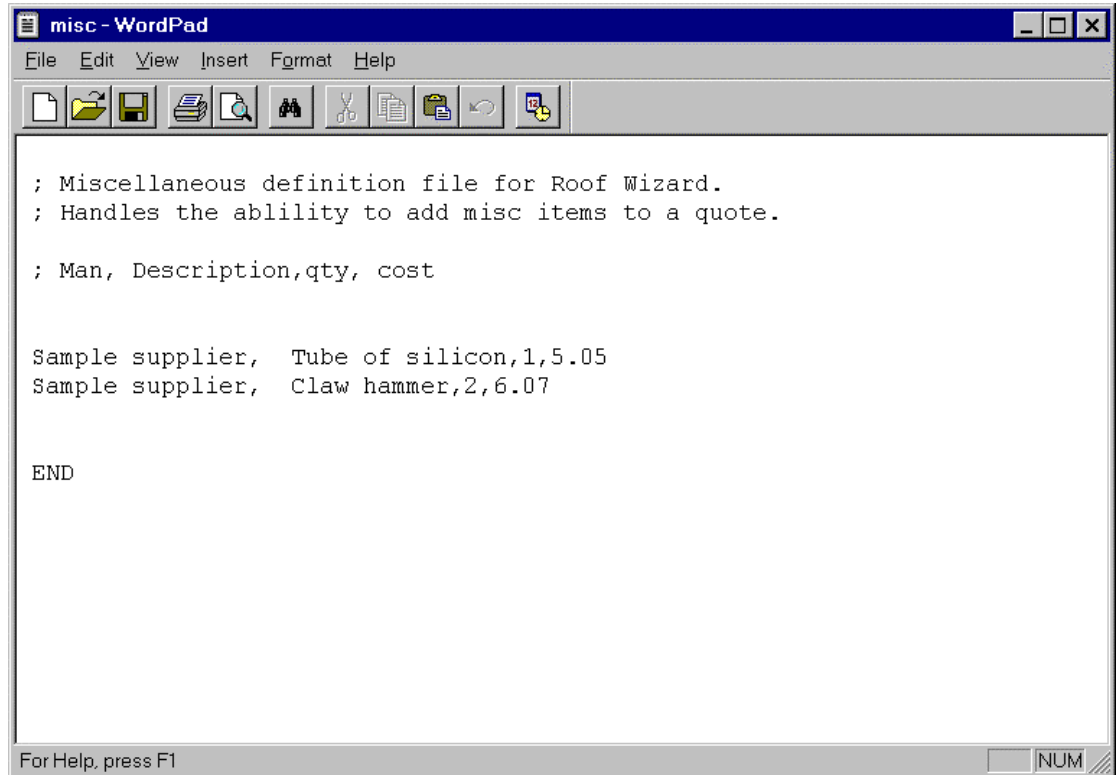
Using the scroll bar on the right side of the dialog scroll down until you find the application **WordPad**. Double click on this application and it will open your Extras.DAT or Misc.DAT file for you. It should look something like this.



With this dialog box now open you can type in your extras. The layout for this is Description of Extra, followed by the Quantity, Cost per Unit and finally a 0 or a 1, depending on whether or not you want the extra to appear in the labour(0) or materials(1) costing.

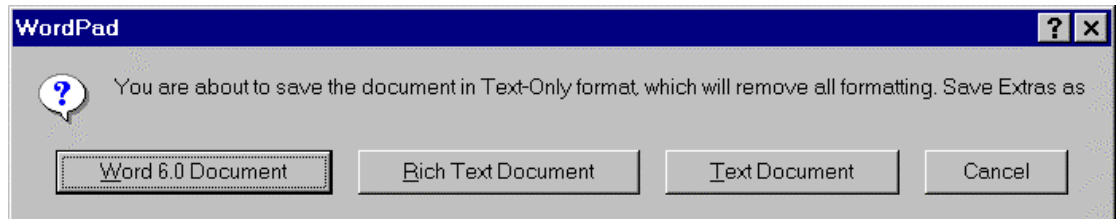
Misc.DAT File

Opening Misc.DAT will bring up a similar dialog box to the following.



From here you can type in your miscellaneous items. The layout for typing in these items are Manufacturer, followed by Description of Item, Quantity, and finally Cost.

With your new extras now written in you must save them into this file. To do this simply click on the floppy disk in the tool bar, bringing up the following dialog box.



From here select **Text Document**. Your new extras or miscellaneous items will now be saved.