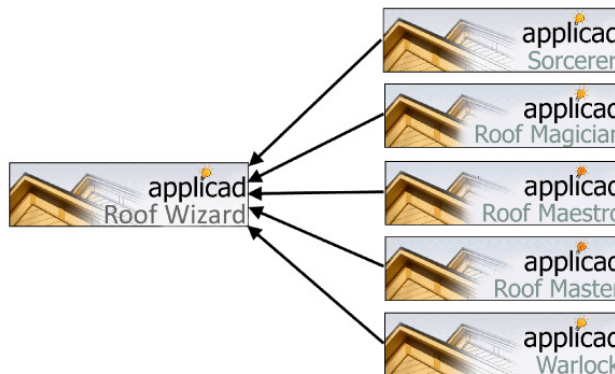


Roof Wizard - Version 6.0 Enhancements List



Products Combined

Roof Wizard is now the only roofing product that AppliCad will be shipping, with the AppliCad Sorcerer, Magician, Warlock and Master products being rolled into this one product for Version 6.0. Existing users of these products on a current Investment Protection (IP) contract with AppliCad will receive the complete product (Tiles, Shingles, Shakes, Metal, Membrane, BUR and Wall Cladding) at no extra charge.



AppliCad Australia

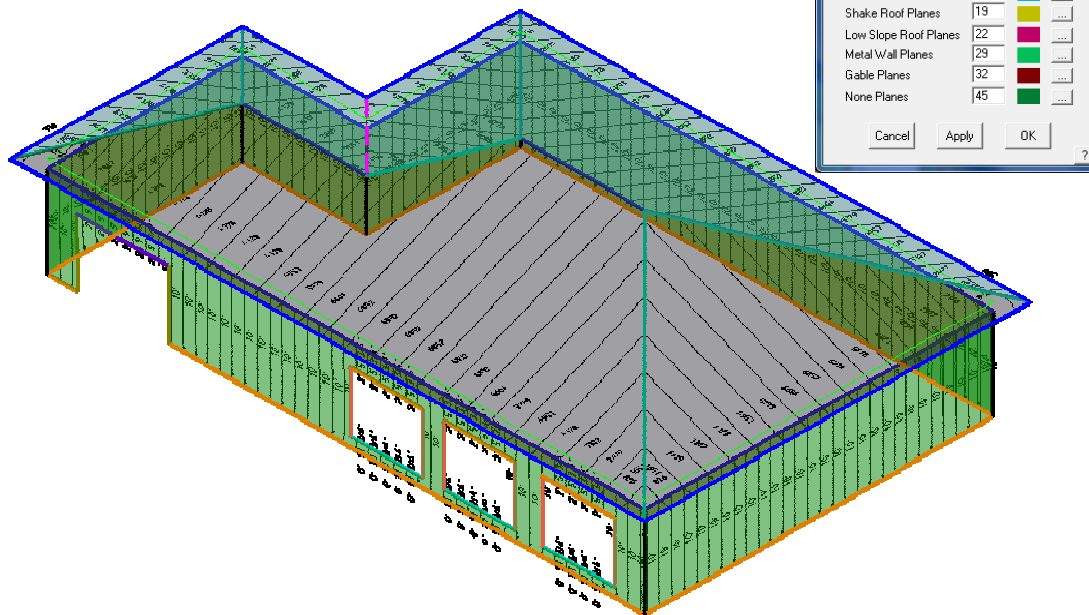
6/70 Railway Rd
Blackburn VIC
Australia 3130
Phone: 61 3 9878 5000
Fax: 61 3 9878 5055

Head Office (Toll Free)

From USA and Canada:
011 800 AppliCad
011 800 2775 4223
From UK:
00800 AppliCad
00800 2775 4223

Filled Planes in Place of Linework

We have modified the representation of the roof planes to allow users to display the roof planes as transparent filled planes. This not only looks more representative of a real roof, but also allows for the documentation of any roof to appear without conflicting with the roof planes as they have often done previously.



AppliCad USA Inc

1340 US Highway 1
Jupiter, FL, 33469
Ph: (561) 748 0545
Fax: (561) 748 0546
Toll free: 1 800 966 1698

AppliCad UK Ltd

MWB Business Exchange
Exchange House
494 Midsummer Boulevard
Central Milton Keynes
MK9 2EA
Phone: 01908 255998
Fax: 01908 255700

AppliCad Australia
is a trading name of
JR Systems Pty Ltd
ABN: 98 052 127 787

Using the Mouse



Mouse Improvements

We have modified the ability to manipulate the roof model using the mouse. Zooming by scrolling the mousewheel has been improved as well as allowing the model to be panned by holding down the centre mouse button and moving the mouse. Zoom-Fit can now be accessed by Double-Clicking on the centre mouse button.

We have also added in an ESC key click to work in the same way as an abort/right mouse button click to assist migrating AutoCAD users.

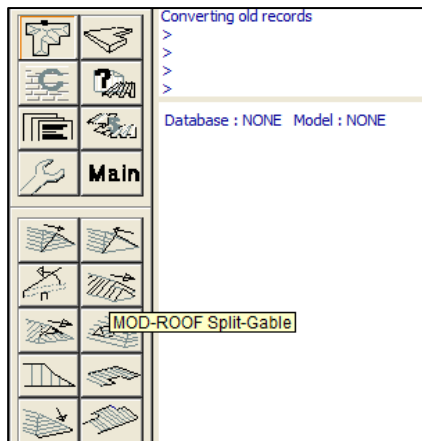
Email: enquiries@applicad.com.au
Web: <http://www.applicad.com.au>

Roof Wizard - Version 6.0 Enhancements List



ToolTips Added to Icon Menus

A long discussed topic regarding the AppliCad software has been the desire to have tooltips appear over the top of our vector/scalable icons. The inclusion of tooltips in this version of the software will greatly assist new and old users to locate and use the Icon menu, thus improving the speed of the software by using icons instead of pulldown or side menu systems.



AppliCad Australia

6/70 Railway Rd
Blackburn VIC
Australia 3130
Phone: 61 3 9878 5000
Fax: 61 3 9878 5055

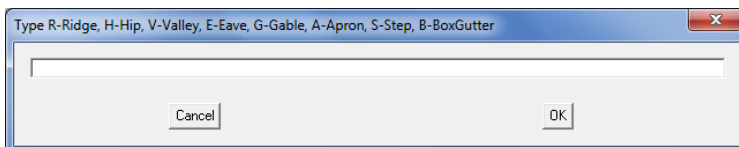
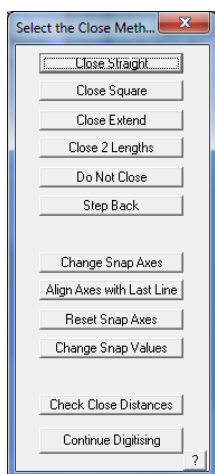
Head Office (Toll Free)

From USA and Canada:
011 800 AppliCad
011 800 2775 4223
From UK:
00800 AppliCad
00800 2775 4223

2D Digitising

We have worked on substantially improving the ability to digitise or track models of roofs in 2D. Improvements in raster imagery provided to our customers and a strong desire to "not have to model a roof in 3D unless necessary" has dictated this development. A number of improvements in the software have been made to support 2D digitising, as different users operate the software in various ways:

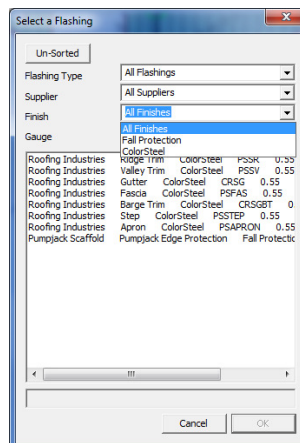
- Added a completely new function to permit the user to digitise each line individually over a raster image and to specify the line type by selecting a single letter. Once a closed loop is created by the user the roof material, storey and pitch are entered and a 2D plane is created that can subsequently be used as if it were a 3D plane.



- A number of new options have been added to the Close Method when digitising (selected using the right mouse button). These options provide a new close method (2 Lengths) as well as options to modify the snap axes and snap values on-the-fly. In addition, the CTRL key can be used to override the snaps at any time.
- Modified Cut-Out function to ensure it also works well with 2D planes.
- Improving the workflow of 2D line and plane insertion by including looping and improving auto-selection of plane loops.

Easier Flashing Selection

We have modified the flashing selection dialog to incorporate a number of filters, thus minimising the number of flashings that are displayed to the user. This feature can drastically reduce time locating and selecting flashings by allowing the user to filter by Flashing Type, Supplier, Finish or Metal Gauge.



AppliCad USA Inc

1340 US Highway 1
Jupiter, FL, 33469
Ph: (561) 748 0545
Fax: (561) 748 0546
Toll free: 1 800 966 1698

AppliCad UK Ltd

MWB Business Exchange
Exchange House
494 Midsummer Boulevard
Central Milton Keynes
MK9 2EA
Phone: 01908 255998
Fax: 01908 255700

AppliCad Australia
is a trading name of
JR Systems Pty Ltd
ABN: 98 052 127 787

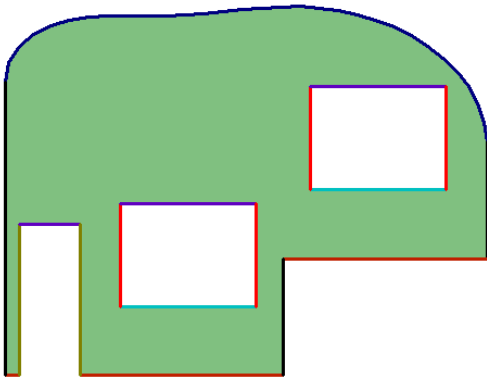
Roof Wizard - Version 6.0 Enhancements List



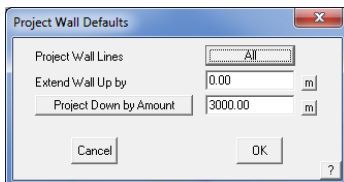
Wall Cladding Enhancements

A number of improvements have been added to the Wall Cladding software package and as these are now included in the standard software package, we have outlined them as part of the standard product here. In the past, wall cladding enhancements have been placed in a separate location in this document:

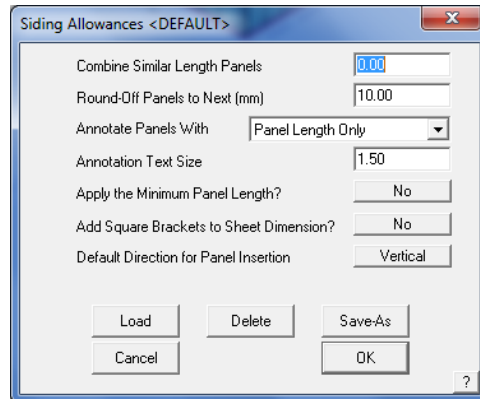
- Option added to wall allowances to allow pre-defining of the wall panel direction prior to insertion.
- Wall direction lines have been modified to include arrow heads on the lines, thus making them much clearer to perceive in ISO view.
- Addition of highlight buttons to the Wall Tally dialog to permit users to see what has been tallied and what has not.



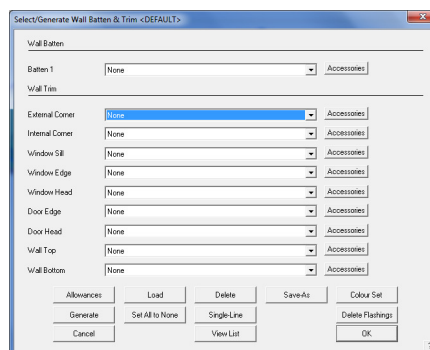
- Modified the Wall Flashing dialog to work in much the same way as the Roofing Flashing dialog. This will permit improved speed of operation, only displaying line types that exist in the model and also permitting commercial assemblies to be easily selected.
- Modified Wall-Change-Orientation so that if wall panels were inserted prior to re-orienting, the panels are re-inserted.



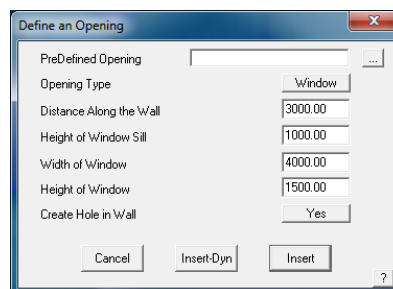
- Added Save-As, Delete and Load options to Wall Flashing menu to permit the saving away of a number of different allowances for wall cladding.
- Added Cut Hole Y/N option to openings to allow opening to be added to a wall without requirement to cut a hole in the wall.



- Added Create Wall functionality to permit walls to be created from basic linework. This tool will allow the user to draw any combination of lines and arcs to make up a wall and will then allow the insertion of a wall structure within this linework.
- Added a new feature to the Project Walls command to permit walls to be extended upwards from the wall construction line as well as downwards.



- Modified output of Export File from Tally Walls to use new Wall Tally report as an AppliCad or Word/Excel template.



AppliCad Australia

6/70 Railway Rd
Blackburn VIC
Australia 3130
Phone: 61 3 9878 5000
Fax: 61 3 9878 5055

Head Office (Toll Free)

From USA and Canada:
011 800 AppliCad
011 800 2775 4223
From UK:
00800 AppliCad
00800 2775 4223

AppliCad USA Inc

1340 US Highway 1
Jupiter, FL, 33469
Ph: (561) 748 0545
Fax: (561) 748 0546
Toll free: 1 800 966 1698

AppliCad UK Ltd

MWB Business Exchange
Exchange House
494 Midsummer Boulevard
Central Milton Keynes
MK9 2EA
Phone: 01908 255998
Fax: 01908 255700

AppliCad Australia
is a trading name of
JR Systems Pty Ltd
ABN: 98 052 127 787

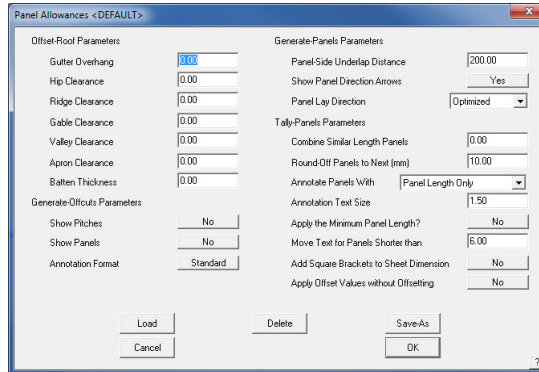
Roof Wizard - Version 6.0

Enhancements List



Metal Panel Allowances

- Added function to the Panel Allowances dialog to apply roof offsets specified under "Offset Roof Parameters" without requirement to actually offset the roof. This enhancement provides for the majority of functionality that customers are looking for (generally applying just a gutter/eave overhang) without the need of generating further model complexity by having to offset the roof.
- Modified code so that any pricing calculation of metal panel costs by area takes into account the Panel Side Underlap Distance.



AppliCad Australia

6/70 Railway Rd
Blackburn VIC
Australia 3130
Phone: 61 3 9878 5000
Fax: 61 3 9878 5055

Head Office (Toll Free)

From USA and Canada:
011 800 AppliCad
011 800 2775 4223
From UK:
00800 AppliCad
00800 2775 4223

AppliCad USA Inc

1340 US Highway 1
Jupiter, FL, 33469
Ph: (561) 748 0545
Fax: (561) 748 0546
Toll free: 1 800 966 1698

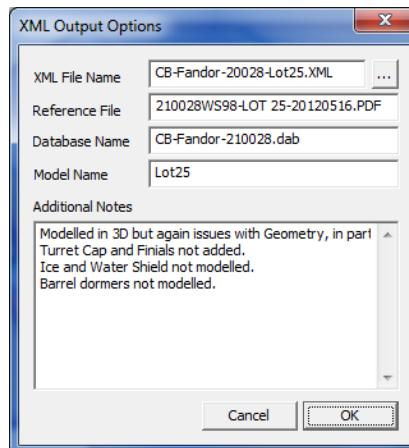
AppliCad UK Ltd

MWB Business Exchange
Exchange House
494 Midsummer Boulevard
Central Milton Keynes
MK9 2EA
Phone: 01908 255998
Fax: 01908 255700

AppliCad Australia
is a trading name of
JR Systems Pty Ltd
ABN: 98 052 127 787

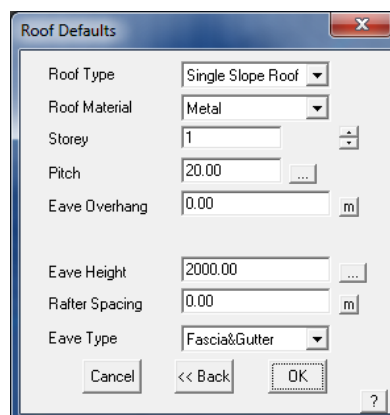
Model Creation and Exporting

- Modified the File Save, Save-As and Open dialog to remove a substantial amount of clutter and make things clearer for our customers. This included creating a single directory tree control that takes the place of three previous controls in the older versions of the software.
- In addition to modifying the File Save and Open dialogs, we have also modified the Directory Selection dialog to utilise the same directory tree control.
- The XML Import and Export routines have been substantially modified to include non-graphical data within them for estimation purposes. Such data includes pitch/slope, units of measure, areas, lengths, volumes, notes and line/plane types etc. In addition, an XML Export dialog has been created to allow for the output and reference files to be specified, as well as the database and model names and any additional notes.



Simplification of 3D Roof Creation

- We have combined the Pitched and Single-Slope roof options to allow the user to make the decision which type of roof to insert after the outline of the roof has been digitised or tracked. This will reduce the number of instances where users has previously selected the wrong command to construct a roof and should result in faster use of the software.
- Added an option to the Hor-Vert button on the tracking dialog to allow the user to specify a resultant distance for when either a horizontal or vertical distance are known, but not the other.
- Added 3 extra close methods that can automatically be typed into the direction/distance field on the track outline dialog. "X" for Close Straight, "V" for Close 2-Lengths and "E" for Close Extend in addition to the existing "C" for Close Square.



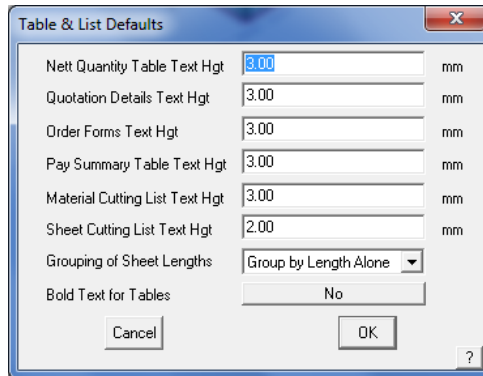
Roof Wizard - Version 6.0

Enhancements List



Report Generation

- We have modified the code that previously only allowed output to XLS, XLT, DOC, DOT or AppliCad Template Files to now incorporate any text file type. This functionality will permit users to create XML reports or any other text format reports including HTML pages.
- A number of new Key Text Strings have been added to the software to further improve the reporting capabilities of the Roof Wizard software. The new options include ###StepList, ###User1List, ###User2List, ###User3List, ###User4List, ###CostingSimpleTable, ###FasciaAccessList and ###GutterAccessList.
- Added a new option to permit the user to modify the output of the Sheet Cutting List to group panels by Length, Roof Plane or indeed as per previous with no Grouping at all.



Smaller Modifications

- Allowed user to manually set stretch-out and number of bends for custom flashings where no profile selected. Ensured flashings with manually set stretch-out and number of bends calculated fabrication rate properly.
- Added Add-Assemblies to Costing Screen. This allows for whole assemblies to be added rather than having to add constituent parts individually. Option is only available if running in Commercial mode.
- Removed all hole functionality with Del-Hole being the only function remaining. The Cut-Out command now performs the same action as the Hole routine did previously.
- Modified the processing of flashings so that software ignores any non-flashing lines. This has greatly improved the speed of processing of flashings, especially for users who place metal panels or blocks on the model prior to processing flashings.
- Modified Change-Linetype command to position linetype near end of each line. The linetype is now displayed in the same colour as the linework and is in permanent text so as to allow users to print the given linytypes out. Any change of linetype displays immediately if Show-Linytypes if turned on.
- Added Batten2 labour rates to fixed and variables rates for Metal roofing.
- Added Gable option to Change Plane Material to allow you to change a Gable Plane into Metal, Tiles etc.
- Modified Text Height for reporting to use the same value as for Gen-Panels text height.
- Modified code so that software asks whether you want to delete the lay direction arrows when deleting panels. Previously this was a two-step process.
- Ensured BMP files copied from clipboard save away using the database/model name, or Temp.BMP if model not saved.

AppliCad Australia

6/70 Railway Rd
Blackburn VIC
Australia 3130
Phone: 61 3 9878 5000
Fax: 61 3 9878 5055

Head Office (Toll Free)

From USA and Canada:
011 800 AppliCad
011 800 2775 4223
From UK:
00800 AppliCad
00800 2775 4223

AppliCad USA Inc

1340 US Highway 1
Jupiter, FL, 33469
Ph: (561) 748 0545
Fax: (561) 748 0546
Toll free: 1 800 966 1698

AppliCad UK Ltd

MWB Business Exchange
Exchange House
494 Midsummer Boulevard
Central Milton Keynes
MK9 2EA
Phone: 01908 255998
Fax: 01908 255700

AppliCad Australia
is a trading name of
JR Systems Pty Ltd
ABN: 98 052 127 787

Roof Wizard - Version 6.0

Enhancements List



- Ensured lap directions when inserting sheets are the same as lap directions when using Insert-Auto. Previously these were slightly different.
- Added zoom-fit after eaves draw to ensure we can see all the roof when modifying the outline to include gable and eave overhang modifications.
- Prevented gable planes from flashing when using flash command in Tally-Quantities.
- Ensured labour rates pertaining to user defined linestyles are output and calculated correctly for Supply & Install labour output.
- Added new estimation method for Flashings entitled Per Hip Apex. Per Apex has now been changed to Per Gable Apex.
- Increased size of application pad for Quote Records and other records stored within the database. This should greatly reduce the need to create overflow quotation records and other Bin file issues in the future.

Bug Fixes

- Ensured code for Allowance Files for Metal does not conflict with colours for metal panels.
- Fixed dialog box for Split-Gable because it was not symmetrical.
- Modified UNDO/REDO code for Dormers so that it makes more sense to users who do a lot of previewing. Multiple preview steps are now one UNDO/REDO session.
- Modified wrapping of text for Custom Flashings for when cutting list is too long for box.
- Ensured Tile Coursing code works for 2D flat panels.
- Modified code to ensure Sheet Waste calculations are not modified by the Sheet Underlap as per modification for pricing.
- Fixed error with number of window edges being tallied incorrectly.
- Fixed issues with Gen-Offcuts including "Max" button not working nor linear nesting in general. Also made sure linear nesting cleans up offcuts and nested pieces and "Max" button accesses offcuts as well as strip sheets.
- Modified Create-Wall to insert Wall Plane on Layer 10, not 11.
- Ensured Panels Split on walls are returned to the correct layer for any subsequent re-splitting.
- Fixed issue with Sheet Area not tallying correctly for some accessories.
- Fixed issues with sheets not dimensioning correctly for wall planes drawn flat on screen.
- Fixed CPL modification issues for tallying panels and insertion of battens.
- Fixed code for Add-Edge-Point in SmartLines that was causing UNDO to not work properly.
- Fixed issue that caused Help file to appear when not clicked on.
- Fixed crash caused by Help File not being accessible.
- Fixed issue where labels for downspouts would go missing.
- Fixed crash with Crickets where undo was creating a problem. Also modified Crickets to use Plane Add-Edge-Point rather than hole.
- Fixed issue where non-zero qty line items were being written out in GRIM file.
- Fixed issue where software got stuck in a loop when Merging Same Flashing.
- Fixed issue where ridge battens somehow came out both on same side of Ridge.
- Fixed issue of Sheet Allowance Panel Direction not reading back in for saved files.
- Fixed issue of not saving away Estimation Method for DownSpouts.
- Fixed issue where second Batten/Purlin record was not being output correctly with cutlist in GRIM file output.

AppliCad Australia

6/70 Railway Rd
Blackburn VIC
Australia 3130
Phone: 61 3 9878 5000
Fax: 61 3 9878 5055

Head Office (Toll Free)

From USA and Canada:
011 800 AppliCad
011 800 2775 4223
From UK:
00800 AppliCad
00800 2775 4223

AppliCad USA Inc

1340 US Highway 1
Jupiter, FL, 33469
Ph: (561) 748 0545
Fax: (561) 748 0546
Toll free: 1 800 966 1698

AppliCad UK Ltd

MWB Business Exchange
Exchange House
494 Midsummer Boulevard
Central Milton Keynes
MK9 2EA
Phone: 01908 255998
Fax: 01908 255700

AppliCad Australia
is a trading name of
JR Systems Pty Ltd
ABN: 98 052 127 787

Email: enquiries@applicad.com.au
Web: <http://www.applicad.com.au>

Roof Wizard - Version 6.0

Enhancements List



- Ensured Labour Payrate appears for first record in flashing dialog.
- Ensured blocking-text rounds off to suggested value in allowances.
- Ensured wall panels generate correctly for flat walls.
- Fixed issue for MicroNet users where CUTLIST_LEN should revert back to old format of CUTLIST_LENGTH.
- Fixed issue where sheet length was being increased by length of Overlap/Underlap when no splits were even in the sheet!
- Ensured that labour rates for Nett Rates modify when user selects a new rate file.
- Fixed saving of Crash Files and Recovery.
- Fixed error of raster repaint display due to prompt being in the wrong place.
- Fixed issue pertaining to crashing when model is spun.
- Ensured that splitting of wall planes works correctly.
- Ensured crashing when not selecting colours for downpipes was prevented.
- Modified Change Panel Length so that it not only works better for Filled Planes, but also updates the text correctly as it was failing to do this if no square brackets present.

AppliCad Australia

6/70 Railway Rd
Blackburn VIC
Australia 3130
Phone: 61 3 9878 5000
Fax: 61 3 9878 5055

Head Office (Toll Free)

From USA and Canada:
011 800 AppliCad
011 800 2775 4223
From UK:
00800 AppliCad
00800 2775 4223

AppliCad USA Inc

1340 US Highway 1
Jupiter, FL, 33469
Ph: (561) 748 0545
Fax: (561) 748 0546
Toll free: 1 800 966 1698

AppliCad UK Ltd

MWB Business Exchange
Exchange House
494 Midsummer Boulevard
Central Milton Keynes
MK9 2EA
Phone: 01908 255998
Fax: 01908 255700

AppliCad Australia
is a trading name of
JR Systems Pty Ltd
ABN: 98 052 127 787