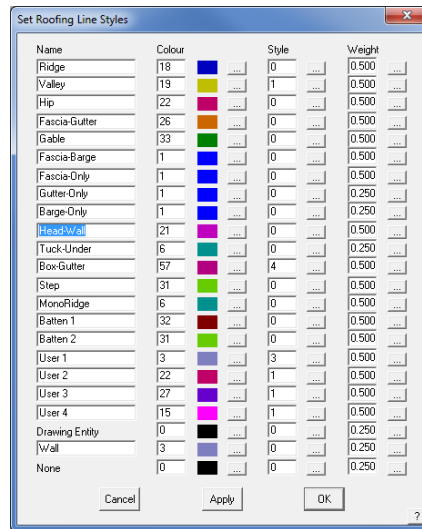


# Roof Wizard - Version 7.0 Enhancements List



## Localisation Options

Roof Wizard now allows users to modify the default line names in the software, in addition to being able to specify their colour, style and weight as previously. This feature allows for localisation into other languages, but more importantly also allows for various names to be utilised for different regions. For instance, an Apron Flashing in Australia is often called a Head-Wall Flashing in the US. This feature allows for such a change to be made by the customer and the change flows through the software all the way to the output.



## Applicad Australia

6/70 Railway Rd  
Blackburn VIC  
Australia 3130  
Phone: 61 3 9878 5000  
Fax: 61 3 9878 5055

## Head Office (Toll Free)

From USA and Canada:  
011 800 Applicad  
011 800 2775 4223  
From UK:  
00800 Applicad  
00800 2775 4223

## Applicad USA Inc

1340 US Highway 1  
Jupiter, FL, 33469  
Ph: (561) 748 0545  
Fax: (561) 748 0546  
Toll free: 1 800 966 1698

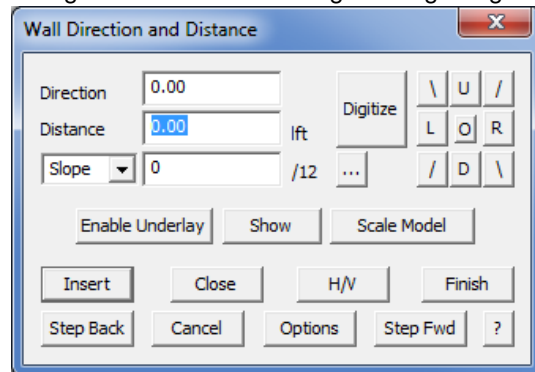
## Applicad UK Ltd

MWB Business Exchange  
Exchange House  
494 Midsummer Boulevard  
Central Milton Keynes  
MK9 2EA  
Phone: 01908 255998  
Fax: 01908 255700

Applicad Australia  
is a trading name of  
JR Systems Pty Ltd  
ABN: 98 052 127 787

## Combined Track-Outline Function

The Track-Outline function in the Applicad Roof Wizard software has been combined into a single tool for both Tracking and Digitizing. The new dialog features not only the ability

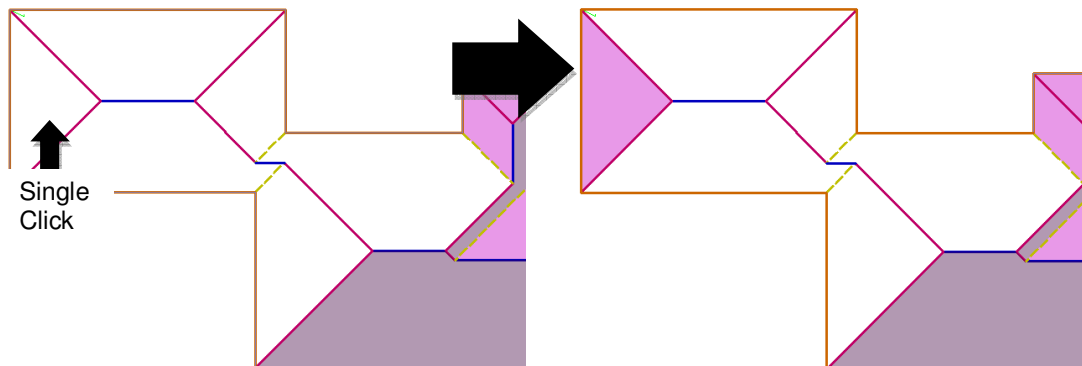


to switch seamlessly between digitizing and typing in eave/wall dimensions, but also includes the Underlay Image and Scaling options all in the one location, vastly improving efficiency of digitizing. In addition to the changes we have made to this part of the code, we have added new image reading code to greatly improve the display of underlay images, including PDF files. We have added a Rotate/Align Image tool to the Scale Model function and we have also added the ability to modify the

lineweight and colour of the track-outline graphics. This last feature greatly improves the ability to see the roof outline over an underlay image.

## New Flood-Fill Routine for SmartLines

A new option has been added to SmartLines that permits the creation of roof planes by simply clicking in a roof area and the roof plane will be inserted automatically, without the need to track around the boundary lines making up the plane.



# Roof Wizard - Version 7.0

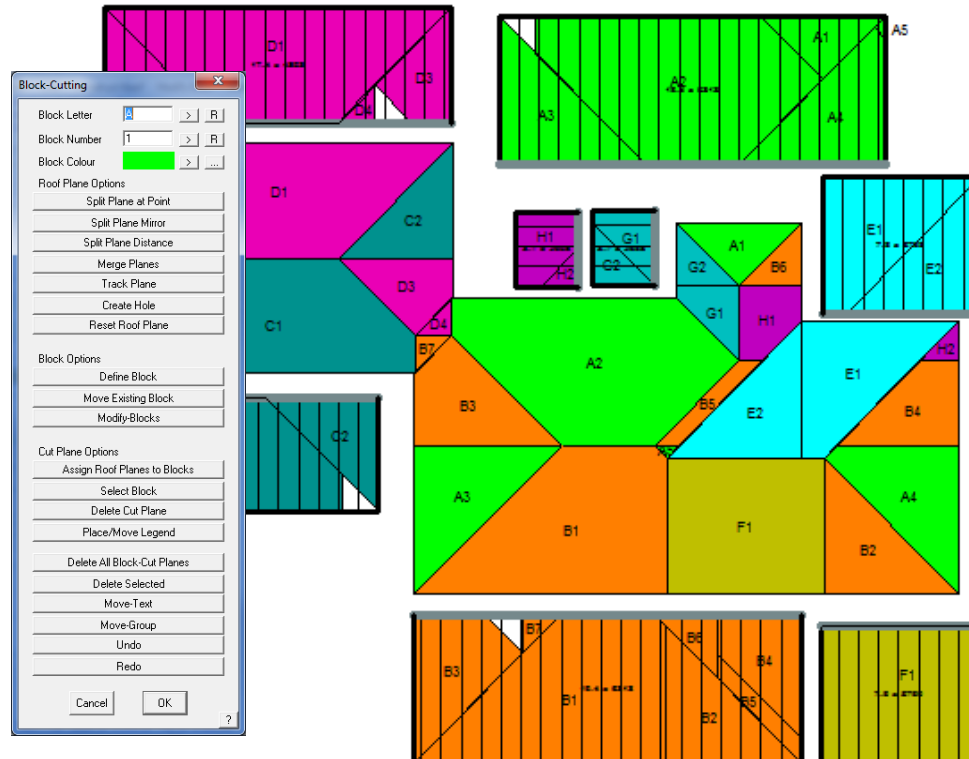
## Enhancements List



### Block-Cutting Method

AppliCad has developed a new method of assisting our users to check their Blocking Methods and to highlight installation processes for roofers. The new method is entitled Block-Cut and allows a user to block a roof and provide visualisation on where certain parts of blocks of panels/sheets are placed on a roof.

A number of tools have been added to assist with the creation of the documentation, including reports to automatically output the result to the printer either directly through one of our CAD reports or through Microsoft Word®. This method ensures installers understand how the roof was estimated and where to install each of the panels.



### AppliCad Australia

6/70 Railway Rd  
Blackburn VIC  
Australia 3130  
Phone: 61 3 9878 5000  
Fax: 61 3 9878 5055

### Head Office (Toll Free)

From USA and Canada:  
011 800 AppliCad  
011 800 2775 4223  
From UK:  
00800 AppliCad  
00800 2775 4223

### AppliCad USA Inc

1340 US Highway 1  
Jupiter, FL, 33469  
Ph: (561) 748 0545  
Fax: (561) 748 0546  
Toll free: 1 800 966 1698

### AppliCad UK Ltd

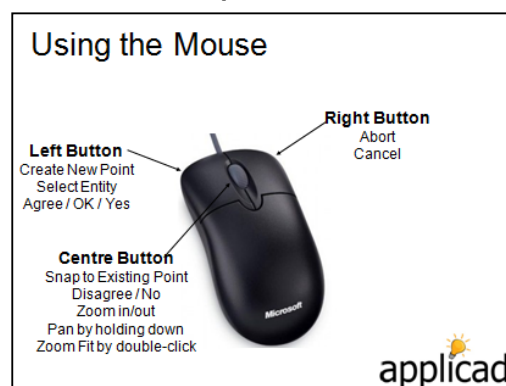
MWB Business Exchange  
Exchange House  
494 Midsummer Boulevard  
Central Milton Keynes  
MK9 2EA  
Phone: 01908 255998  
Fax: 01908 255700

AppliCad Australia  
is a trading name of  
JR Systems Pty Ltd  
ABN: 98 052 127 787

### New Scale Model Functionality

Updated Scale function so that it now also successfully re-scales the underlay image as well as the model. In addition to this, we have added a new feature to align the image horizontally by simply selecting two points on the image. The software rotates the image so that these two points form a horizontal line on the screen.

### Further Mouse Improvements



We have further improved the functionality of the mouse by including the ability to rotate the model around a Z axis by holding down the CTRL button, along with the centre mouse button, and rotating the roof model to the required location. Double-clicking while holding these two buttons also resets the view to it's pre-rotated location.

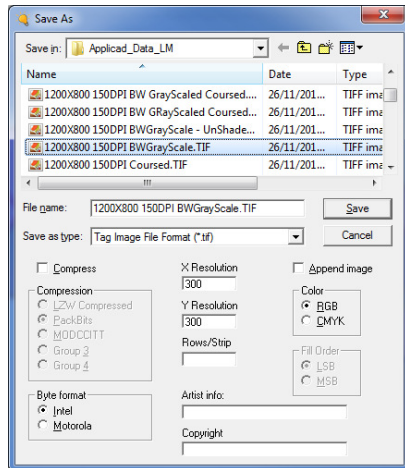
We have also expanded the use of panning so that this can also be performed mid-command. Very handy for instances where the whole model is not visible.

Email: [enquiries@applicad.com.au](mailto:enquiries@applicad.com.au)  
Web: <http://www.applicad.com.au>

# Roof Wizard - Version 7.0 Enhancements List



## Image Output Option



Added a new tool to the Tools menu option to permit the output of an Image using the new Imageman<sup>®</sup> tools incorporated into the software. These new tools permit the output to a large number of image formats and in some instances the quality and size of the images can be specified prior to output.

This tool will prove very useful for users who are modelling roofs from aerial imagery and providing the quantities to their customers. Anything can be modelled on screen and simply output using this tool to a Microsoft Word<sup>®</sup> or Excel<sup>®</sup> file.

When outputting to an "imagery report," software now has the ability to allow the user to preview all images that will be placed into the report prior to actually going through the process of report creation.

### AppliCad Australia

6/70 Railway Rd  
Blackburn VIC  
Australia 3130  
Phone: 61 3 9878 5000  
Fax: 61 3 9878 5055

### Head Office (Toll Free)

From USA and Canada:  
011 800 AppliCad  
011 800 2775 4223  
From UK:  
00800 AppliCad  
00800 2775 4223

### AppliCad USA Inc

1340 US Highway 1  
Jupiter, FL, 33469  
Ph: (561) 748 0545  
Fax: (561) 748 0546  
Toll free: 1 800 966 1698

### AppliCad UK Ltd

MWB Business Exchange  
Exchange House  
494 Midsummer Boulevard  
Central Milton Keynes  
MK9 2EA  
Phone: 01908 255998  
Fax: 01908 255700

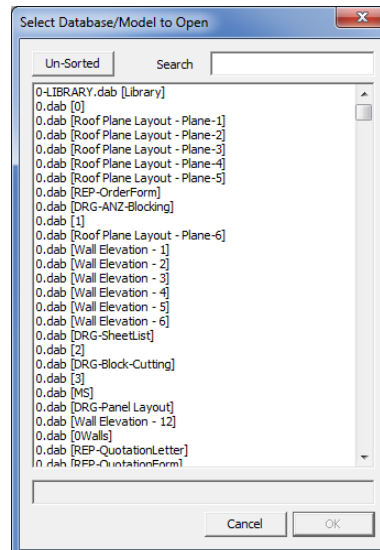
AppliCad Australia  
is a trading name of  
JR Systems Pty Ltd  
ABN: 98 052 127 787

## Improved Search Options

We have added a whole bunch of search tools to be able to search for items within the AppliCad software faster. Of special note is the File -> Search-Database tool that lists every database and model configuration in your User directory and allows you to open any of them with a simple click of a button.

We have also added Search/Filter type options to every list dialog within the software where a long list of items, such as flashings, accessories, fasteners, metal panels etc. are likely to be displayed.

For long-term users of the software, we have added in a "Sort by Last Modified/Alphabetical" option to the File Open dialog, thus permitting users to see the most recent files they have worked on, rather than always having to search through a list for the last model modified.



## Smaller Modifications

- Added Table option to Excel to allow tables to be inserted into an Excel spreadsheet.
- Added all lists and tables that previously only worked in Word into Excel also.
- Added Word-based order forms by use of a document entitled WordOrderTemplate.DOC.
- Added measure buttons to the Wall Opening Insertion code so that users can digitize a wall and then add openings in the same way.
- Added Supplier and Gauge to Accessories so that users can modify them.
- Added a SEARCH feature to ##LI (lineitem) key text strings so that users can search on individual items and output them in Word or Excel.
- Ensured placement of text for Gen-Panels has its location remembered if it is moved, unless deleted.
- Modified maximum number of Flashings from 2000 to 5000.
- Added key text string ###Batten2Len to the output options.
- Modified code to allow user to use calculator-type functionality in Supply&Install and Change\_Desc dialog.
- Increased the maximum number of labour rate tables from 20 to 50.

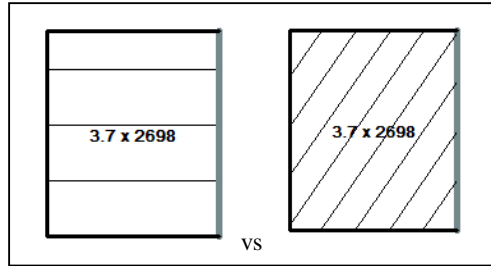
Email: [enquiries@applicad.com.au](mailto:enquiries@applicad.com.au)  
Web: <http://www.applicad.com.au>

# Roof Wizard - Version 7.0

## Enhancements List



- Added a new option to the Blocking Defaults to allow Blocks to be displayed showing the actual sheets, instead of diagonal blocks as previously.
- Created new allowance defaults for Blocking including the original questions at the beginning of every AutoBlock session. Also included Holes, and Show Pitches option for the text label.
- Added option to allow GRO Order Files to be suppressed when outputting a GRIM Out file.
- Added option to Plane Insertion that permits the user to modify the Trace Tolerance, thus permitting plane insertion when the roof model is not perfectly planar.
- Added in Show/Hide Block-Cutting menu option to Modify-Blocks menu when coming from Block-Cutting. Also reduced the complexity of some block-insertion commands.
- Allowed the selection of Misc-Items, Flashings, Accessories, Fasteners and Assemblies to be multi-selection dialogs in Costing. This permits much faster population of the Supply&Install and Supply-Only reporting dialogs.
- Added new functionality to permit the creation of Assembly-Groups for Commercial Users of the software.
- Added ####MHipQty and ####MStepQty key test strings.
- Modified the Pitched / Single-Slope roof option under Roof Defaults to remember its last value. Thus users who do a lot of single-slope roofs won't have to go repetitively changing this option. Also modified it to a button to make it easier to modify quickly.
- Added option to Preferences dialog to allow a user to specify whether the software is to be run in Commercial Mode or as standard. Commercial Mode allows Assembly Groups to be utilised instead of standard individual flashings and incorporates a different database system.
- Added F4 option to all Applicad dialog boxes so that they move to the centre of the screen when selecting F4.
- Added new options to the Roof -> Recover-Outline -> Change-Outline routine to allow the order of the inserted vertices of the roof outline shape, whether entered by Tracking or Digitizing, to be modified (rotated). This greatly assists instances where the outline has been entered but the starting point has not been taken into account for the purposes of barge lines etc. Also increased number of lines displayed from 10 up to 15 per page.
- Added B and N as Step Back and Step Forward hot-key options in Track-Outline dialog, as well as < and > which perform the same task.
- Changed maximum number of Bends for Custom Flashings from 10 to 20.
- Modified Multi-GRIM Quotes to ensure it properly takes into account stages saved away as part of the quoting process.
- Changed maximum number of assemblies allowed from 500 to 10000.
- Modified tolerance output for Dimensioning so that US pitches set for precision of, say, 2 don't display the 6:00/12 for an integer slope. Software now displays 6/12.



### Applicad Australia

6/70 Railway Rd  
Blackburn VIC  
Australia 3130  
Phone: 61 3 9878 5000  
Fax: 61 3 9878 5055

### Head Office (Toll Free)

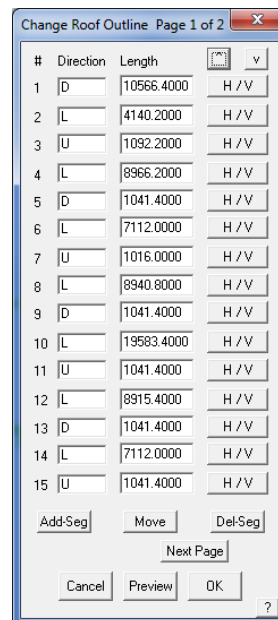
From USA and Canada:  
011 800 Applicad  
011 800 2775 4223  
From UK:  
00800 Applicad  
00800 2775 4223

### Applicad USA Inc

1340 US Highway 1  
Jupiter, FL, 33469  
Ph: (561) 748 0545  
Fax: (561) 748 0546  
Toll free: 1 800 966 1698

### Applicad UK Ltd

MWB Business Exchange  
Exchange House  
494 Midsummer Boulevard  
Central Milton Keynes  
MK9 2EA  
Phone: 01908 255998  
Fax: 01908 255700



Applicad Australia  
is a trading name of  
JR Systems Pty Ltd  
ABN: 98 052 127 787

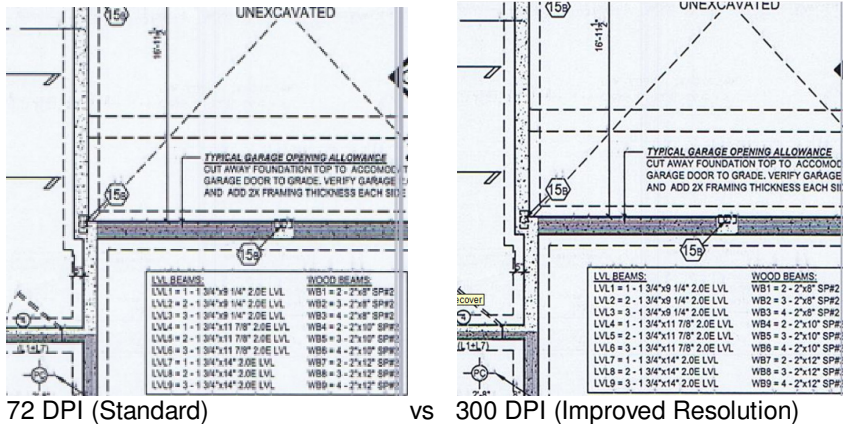


# Roof Wizard - Version 7.0

## Enhancements List



- Modified estimation methods for Zones so that they are lineal and not area-based. Much easier when modifying panel widths all the time.
- Added database and model name to the AppliCad window header, thus removing it from the graphics drawing area of the screen.
- Added option to automatically zoom-fit the screen to the extents of an image file as well as actual CAD graphics that we have drawn on the screen.
- Added options under CAD -> Defaults -> Switches to set the default image resolution (DPI) and Improve Resolution (Anti-Aliasing). Very useful for large PDF files to ensure they display on screen quickly and yet are still readable.



### Bug Fixes

- Fixed labelling of panels for walls and roofs so as to ensure direction measured is always in direction of panel and label is always oriented correctly with regards top/right and up/right for walls in vertical.
- Ensured 2D planes without pitches, once inserted, can have pitch modified.
- Fixed issue where accessories kept asking for Supplier to be selected when trying to exit dialog.
- Modified code for 2D digitising so that you can turn off linetype selection, so that typing in a dimension doesn't get rounded and so that Ctrl-Z works as stepback.
- Fixed issue where slender panels would not split in Walls.
- Fixed issue where APPLICAD.DAB / BACKUP could persist if user decided not to print anything in Supply & Install.
- Updated the Panel Splitting code so that it again takes into account stock lengths.
- Fixed issue where "per intersection with Batten1" (and B2 and U1/U2/U3/U4) was also finding intersections with itself.
- Fixed issue where Ridge and Hip cutting lists were colliding when using the same product code.
- Fixed issue for Wall Elevations not drawing properly when Walls are drawn flat.
- Modified Project-Wall so that if wall projected up instead of down then the wall line types of WALL-BASE and WALL-TOP still work out.
- Fixed issue that made Underlay look like it was truncating one large roll if no smaller roll defined.
- Fixed issue where Custom Profile angles weren't always being calculated correctly.
- Fixed issue where finish from flashings was not being applied to its accessories.
- Fixed issue where Gable, Box Gutter and User1-4 line types don't produce a cut-list for order forms.
- Fixed battens working for window and door edges.

### AppliCad Australia

6/70 Railway Rd  
Blackburn VIC  
Australia 3130  
Phone: 61 3 9878 5000  
Fax: 61 3 9878 5055

### Head Office (Toll Free)

From USA and Canada:  
011 800 AppliCad  
011 800 2775 4223  
From UK:  
00800 AppliCad  
00800 2775 4223

### AppliCad USA Inc

1340 US Highway 1  
Jupiter, FL, 33469  
Ph: (561) 748 0545  
Fax: (561) 748 0546  
Toll free: 1 800 966 1698

### AppliCad UK Ltd

MWB Business Exchange  
Exchange House  
494 Midsummer Boulevard  
Central Milton Keynes  
MK9 2EA  
Phone: 01908 255998  
Fax: 01908 255700

AppliCad Australia  
is a trading name of  
JR Systems Pty Ltd  
ABN: 98 052 127 787

# Roof Wizard - Version 7.0

## Enhancements List

---



- Fixed issue with wall elevations only printing as many walls as there were number of roof planes.
- Fixed issue where overlapping Dormers would delete planes and not properly re-link themselves.
- Fixed issue with RXF output where it was possible for the software to output a plane with a very large area value.
- Fixed issue where valley linestyle was going missing when using some roof modification commands.
- Fixed issue with Track outline where it would keep asking to use incomplete outline despite user selecting No.
- Fixed Add-Misc\_Item not creating the correct customer discount.
- Ensured correct panel area calculation for when method of labour pricing is set to Gross.
- Fixed issue where walls not perfectly drawn in Z would not change their wall direction.
- Ensured lines split under SmartLines -> Divide Line keep tag on both lines created, not just one.
- Ensured saving away of Preview of Database/Model is always set to Yes.

### **AppliCad Australia**

6/70 Railway Rd  
Blackburn VIC  
Australia 3130  
Phone: 61 3 9878 5000  
Fax: 61 3 9878 5055

### **Head Office (Toll Free)**

*From USA and Canada:*  
011 800 AppliCad  
011 800 2775 4223  
*From UK:*  
00800 AppliCad  
00800 2775 4223

### **AppliCad USA Inc**

1340 US Highway 1  
Jupiter, FL, 33469  
Ph: (561) 748 0545  
Fax: (561) 748 0546  
Toll free: 1 800 966 1698

### **AppliCad UK Ltd**

MWB Business Exchange  
Exchange House  
494 Midsummer Boulevard  
Central Milton Keynes  
MK9 2EA  
Phone: 01908 255998  
Fax: 01908 255700

AppliCad Australia  
is a trading name of  
JR Systems Pty Ltd  
ABN: 98 052 127 787