



Sorcerer

Advanced Software for Roof Modeling and Estimating

Tutorial for Inserting Barge Lines

Document Issue 1.0.0 - 14th October, 1999

Table of Contents

| | |
|---------------------------------------|----------|
| TABLE OF CONTENTS | 2 |
| INTRODUCTION..... | 2 |
| Using this manual..... | 2 |
| HOW TO INSERT BARGE LINES..... | 3 |
| Inserting Barge Lines..... | 3 |

Introduction

Using this manual

This tutorial is designed to explain, step by step, the process of inserting barge lines

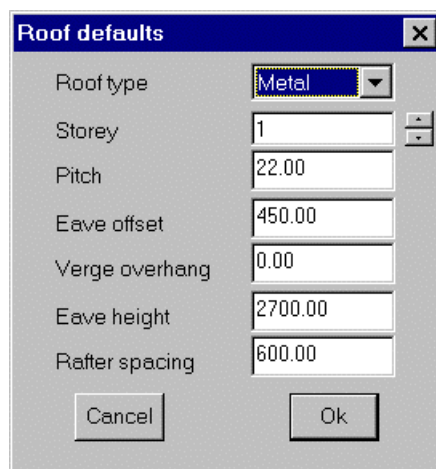
This manual will be helpful if you don't know how to, or forget how to insert barge lines.

How To Insert Barge Lines.

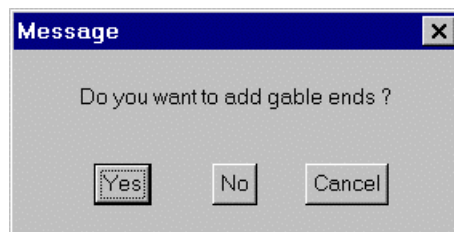
Inserting Barge Lines

If you want to insert barge lines, you must first be sure that the barge line equal each other. i.e total barge lines going down equal total barge lines going up. If this is not the case your roof will not work.

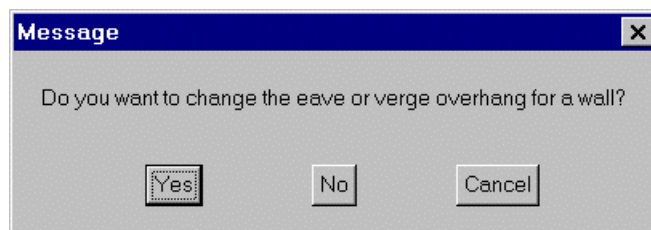
When you have drawn up your walls and have clicked **Finish**, in the drawing up dialog box. You will be confronted with four dialog boxes. The first of these will be the following.



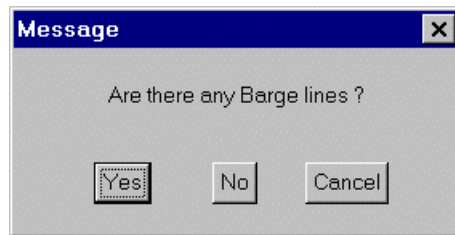
From here enter your dimensions as usual and click **Ok**. This will bring up the following dialog box.



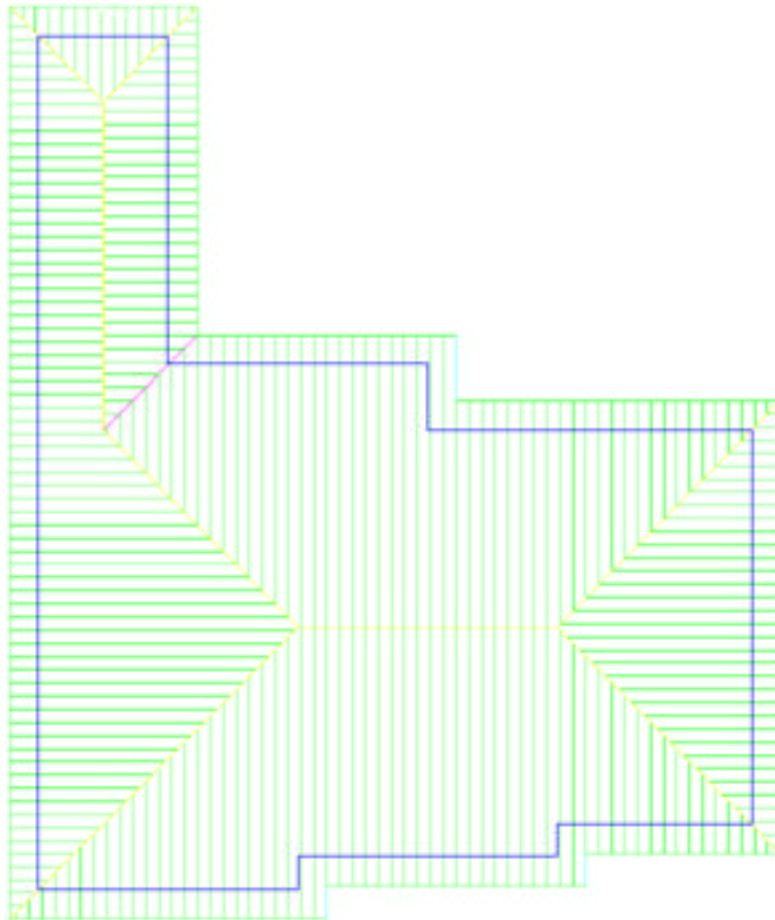
If you want to put in gable ends click **Yes**, if not click **No**. This will bring up the following dialog box.



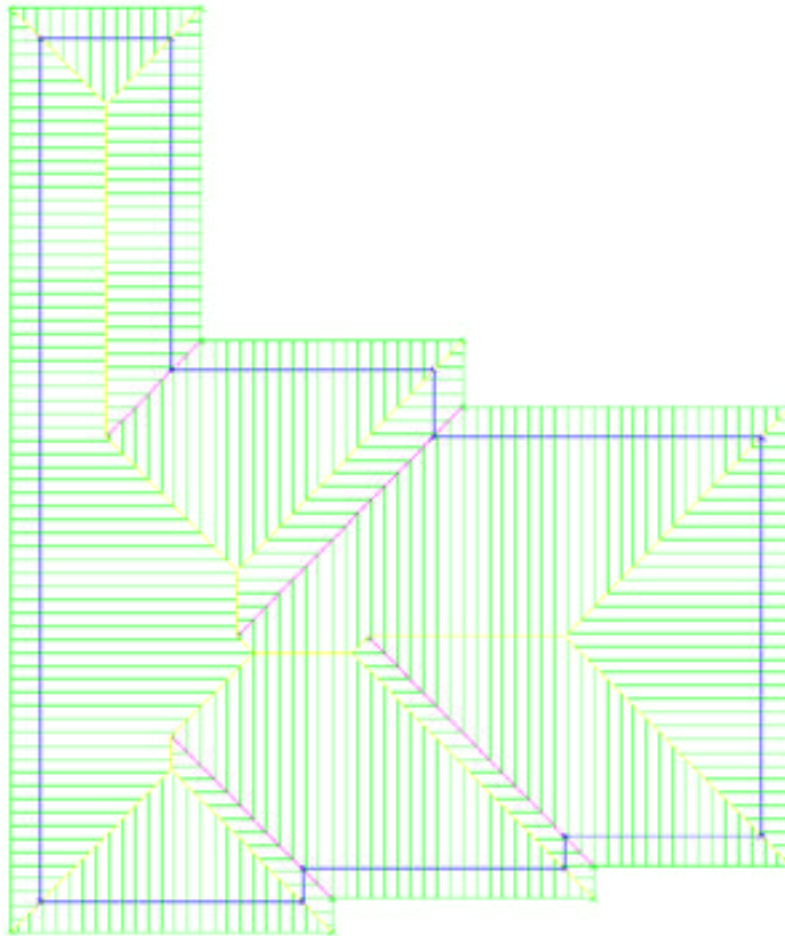
If you would like to change the eave or verge overhang for any singular wall click **Yes**, if not click **No**. This will bring up the dialog that we want.



From this dialog box click **Yes**. You will then be asked which lines you would like to be barge lines. Select the lines that you would like to be your barge line and right click. The software will then draw of your roof for you including the barge lines.



This picture has been drawn up using three barge lines. The following picture shows how the same roof would look like without the use of barge lines.



As can be seen on the second diagram, barge lines have not been used as there are 3 more valleys and hips than on the previous roof.