



---

# **Sorcerer**

---

**Advanced Software for Roof Modeling and Estimating**

---

**Tutorial for Changing Screen Resolution**

Document Issue 1.0.0 - 28<sup>th</sup> September 1999

## Table of Contents

<b>TABLE OF CONTENTS .....</b>	<b>2</b>
<b>INTRODUCTION.....</b>	<b>2</b>
Using this manual.....	2
<b>HOW TO CHANGE YOUR SCREEN RESOLUTION. ....</b>	<b>3</b>

## Introduction

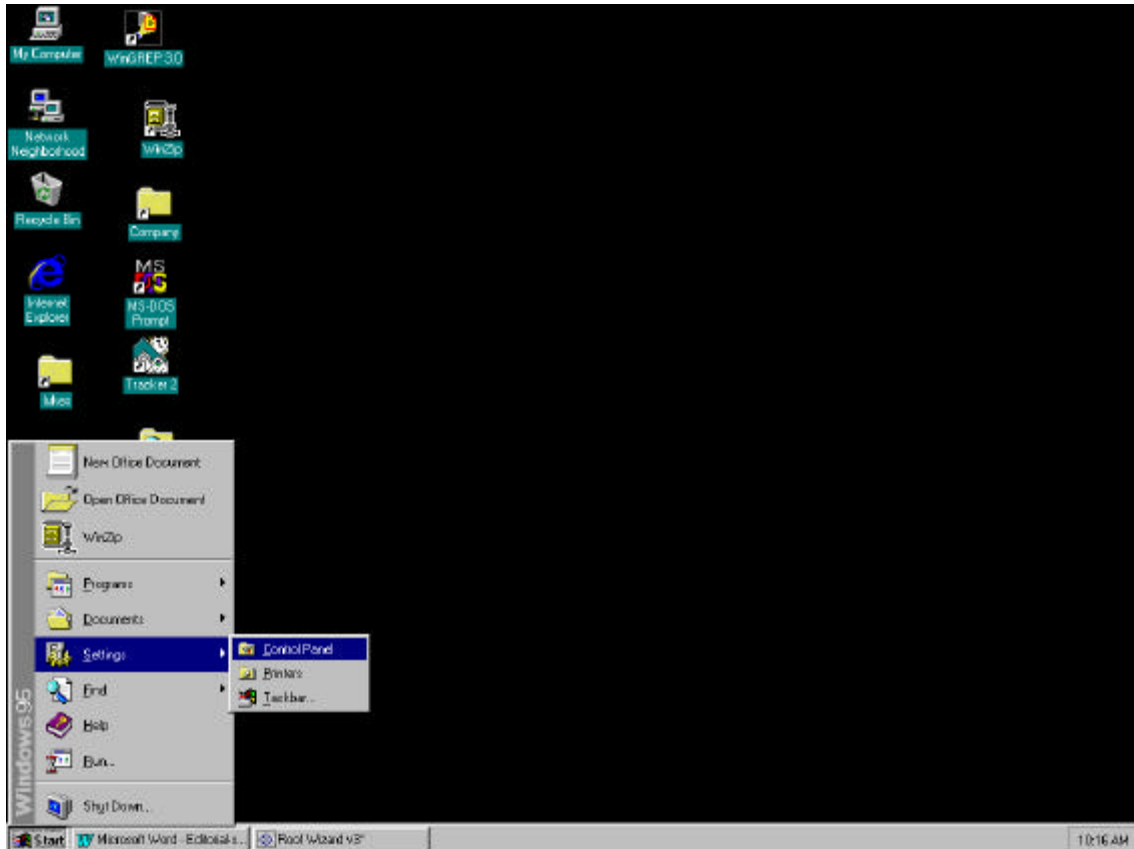
### Using this manual

This tutorial is designed to explain, step by step, the process of changing your screen resolution.

This manual will be helpful if you find your screen is too small, or the dialogs in the software too small.

## How To Change Your Screen Resolution.

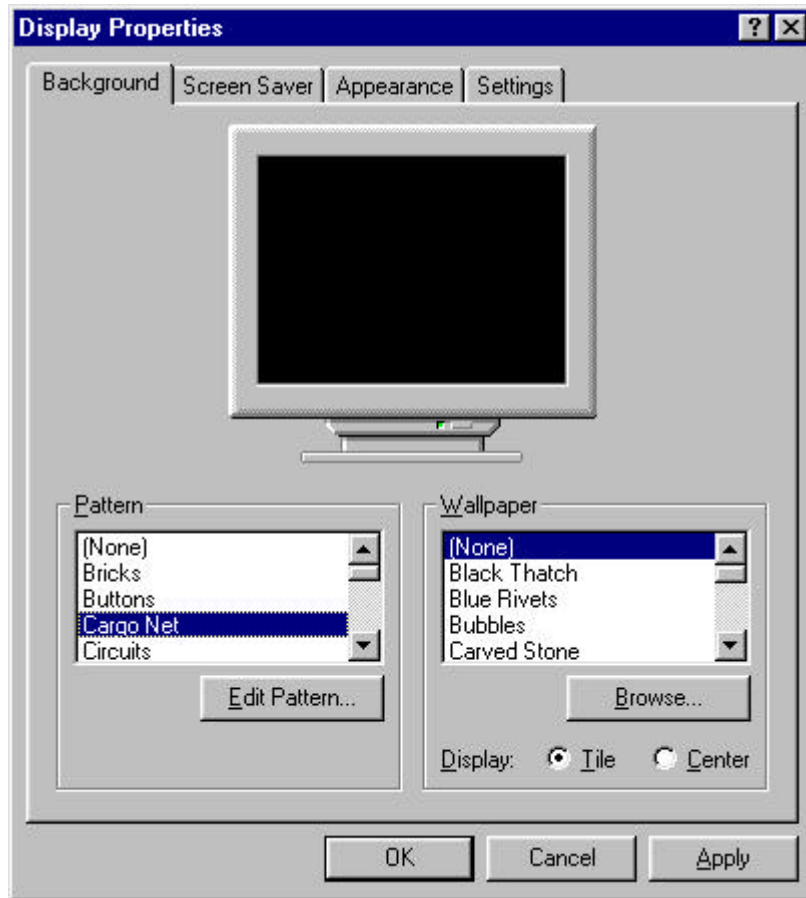
To change your screen resolution, select **Settings** from you **Start Menu** on your windows desktop and then choose **Control Panels**.



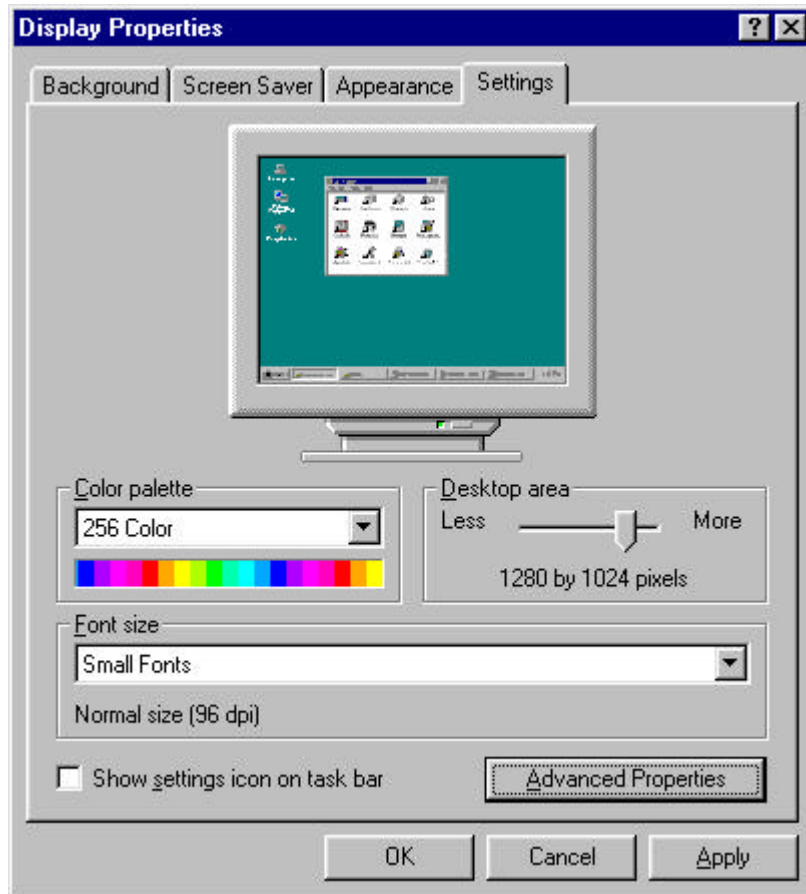
Selecting this will bring up the following Dialog box.



From here double click on **Display**. This will bring up the following dialog box.



From this screen, select the **Settings** section. In turn bringing up the following dialog box.



In this dialog box click and hold on the down arrow in the desktop area. With the mouse button held down, move the mouse from left to right and this should move, adjusting your resolution as it does, this will be shown in the tiny screen in this dialog box, and also in pixels under the arrow. The more pixels there are the more you can fit on the screen. When the appropriate resolution has been achieved, release the mouse button. With this now done click on **Apply**, and the screen will now change to the resolution that you have selected. Then click on **Ok** the exit.

Note: If the picture doesn't appear central after you have changed the resolution you may have to alter the picture on the monitor by using the monitor adjust controls on the bottom of the monitor.